

AL300X220 Series

Power Supply/Chargers

Altronix AL300X220 series power supply/chargers convert a 220VAC (working range 198VAC - 256VAC), 50/60Hz input into a single, four (4), eight (8) or sixteen (16) fuse/PTC protected outputs. Outputs are selectable for 12VDC or 24VDC with a total of 2.5A max.



AL300PD8220

Key Features

- Available with 1, 4, 8 or 16 outputs
- Fused or PTC protected outputs
- Supervision
 - AC Fail
 - Battery Fail and Battery Presence
- Built-in charger for sealed lead acid or gel type batteries
- Instantaneous transfer to stand-by batteries
- Short circuit and overload protection
- AC input and DC output options
- Lifetime Warranty
- All units are available in grey or red enclosure

AL300X220 series Power Supply Configuration Reference Chart

Altronix Model Number	Input Rating: 220VAC, 50/60Hz	Input Fuse Rating	Power Supply Battery Fuse Rating	Total Output Rating (A)	Power Distribution Module(s)	Number of Outputs	Fused Outputs Ratings	PTC Auto-Resettable Outputs Ratings	Accommodates Batteries
AL300X220	1.7A	5A/250V	15A/32V	2.5A	N/A	1	3.5A	-	Two (2) 7AH
AL300XX220									Two (2) 12AH
AL300XJ220									Two (2) 18AH
AL300PD4220					PD4	4	3.5A	-	Two (2) 7AH
AL300XPD4220									Two (2) 12AH
AL300PD4CB220					PD4CB	-	2.5A	Two (2) 7AH	
AL300XPDCB4220								Two (2) 12AH	
AL300PD8220					PD8	8	3.5A	-	Two (2) 7AH
AL300XPD8220									Two (2) 12AH
AL300PD8CB220									PD8CB
AL300XPDCB220					Two (2) 12AH				
AL300XPD16220					Two (2) PD8	16	3.5A	-	Two (2) 12AH
AL300XPD16CB220									Two (2) 12AH

Lifetime Warranty



AL300X220 Series

Power Supply/Chargers

Specifications

Input

Voltage 220VAC (working range 198VAC - 256VAC), 50/60Hz, 1.7A max.

Fusing 5A/250V

Outputs

Voltage 12VDC or 24VDC selectable

Current 2.5A continuous max.

Protection Fused 3.5A / PTC 2.5A

Other Overvoltage protection
Filtered and regulated

Back-up Battery *(not included)*

Capacity 7AH/12VDC (1 or 2 within enclosure)
12AH/12VDC (requires larger "X" enclosure)
18AH/12VDC (requires larger "J" enclosure)
40AH/65AH (requires separate enclosure)

Type Sealed lead acid or gel type

Fuse Rating 15A @ 32VDC

Failover Upon AC loss, instantaneous

Supervision

AC Failure Form "C" contacts

Battery Form "C" contacts

Indicators (LED)

Input 220VAC is present

DC Output Powered

Battery Discharged or not connected

Physical and Environmental

Dimensions (H x W x D)

AL300X220, AL300PD4(CB)220, AL300PD8(CB)220:

Enclosure:

13.5" x 13" x 3.25" (342.9mm x 330.2mm x 82.55mm)

Shipping:

15" x 13.875" x 4.75" (381mm x 352.4mm x 120.6mm)

AL300XX220, AL300XP4(CB)220, AL300XP8(CB)220, AL300XP16(CB)220:

Enclosure:

15.5" x 12" x 4.5" (393.7mm x 304.8mm x 114.3mm)

Shipping:

16.5" x 13.5" x 6" (419.1mm x 342.9mm x 152.5mm)

AL300XJ220:

Enclosure:

18" x 14.5" x 4.625" (457.2mm x 368.3mm x 117.5mm)

Shipping:

21.75" x 18.25" x 5.75" (552.5mm x 463.6mm x 146.1mm)

Weight (approx.)

Model	Product Weight	Shipping Weight
AL300X220	6.65 lb. (3.1 kg)	8.45 lb. (3.83 kg)
AL300XX220	8.25 lb. (3.75 kg)	10.55 lb. (4.79 kg)
AL300XJ220	11.5 lb. (5.22 kg)	13.7 lb. (6.21 kg)
AL300PD4(CB)220	6.8 lb. (3.1 kg)	8.6 lb. (3.9 kg)
AL300XP4(CB)220	8.4 lb. (3.81 kg)	10.7 lb. (4.85 kg)
AL300PD8(CB)220	6.9 lb. (3.13 kg)	8.7 lb. (3.95 kg)
AL300XP8(CB)220	8.5 lb. (3.86 kg)	10.8 lb. (4.9 kg)
AL300XP16(CB)220	8.55 lb. (3.88 kg)	10.85 lb. (4.92 kg)

Temperature

Operating: 0°C to 49°C (32°F to 120°F)

Storage: - 20°C to 70°C (- 4°F to 158°F)

Relative Humidity 85% +/- 5%

BTU/Hr (approx.) 12VDC: 17 BTU/Hr.

24VDC: 32 BTU/Hr.

Lifetime Warranty

Altronix Corporation | 140 58th St | Brooklyn, NY 11220 USA

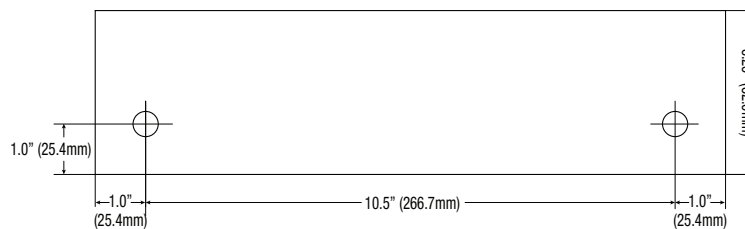
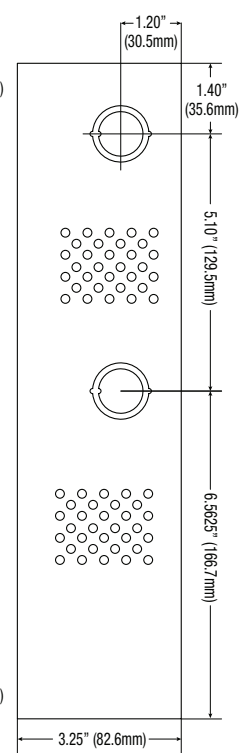
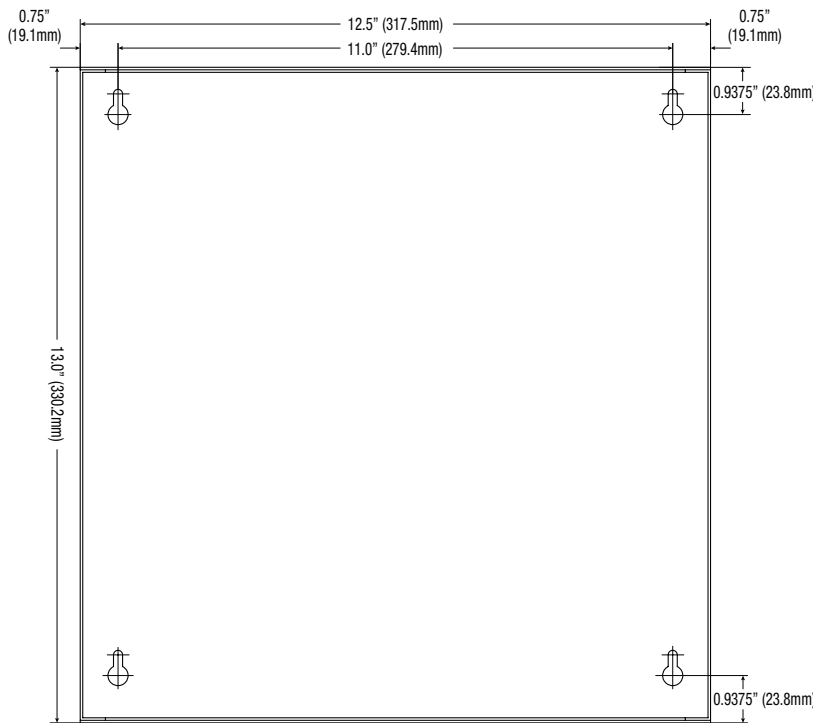
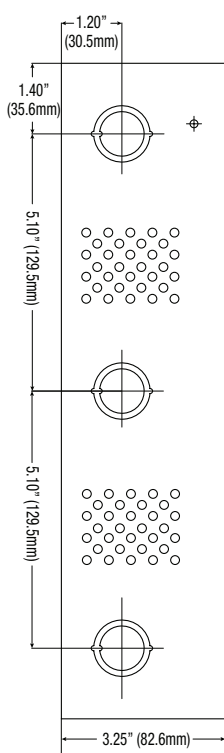
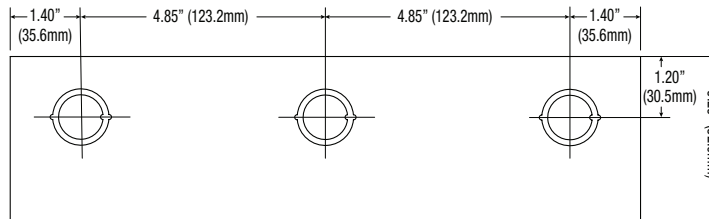
phone: +1 718.567.8181 | fax: +1 718.567.9056 | email: info@altronix.com | www.altronix.com

AL300X220 Series

Power Supply/Chargers

Dimensions and Drawing

AL300X220, AL300PD4(CB)220, AL300PD8(CB)220 Dimensions (H x W x D approximate)
 13.5" x 13" x 3.25" (342.9mm x 330.2mm x 82.6mm)



Lifetime Warranty

Altronix Corporation | 140 58th St | Brooklyn, NY 11220 USA

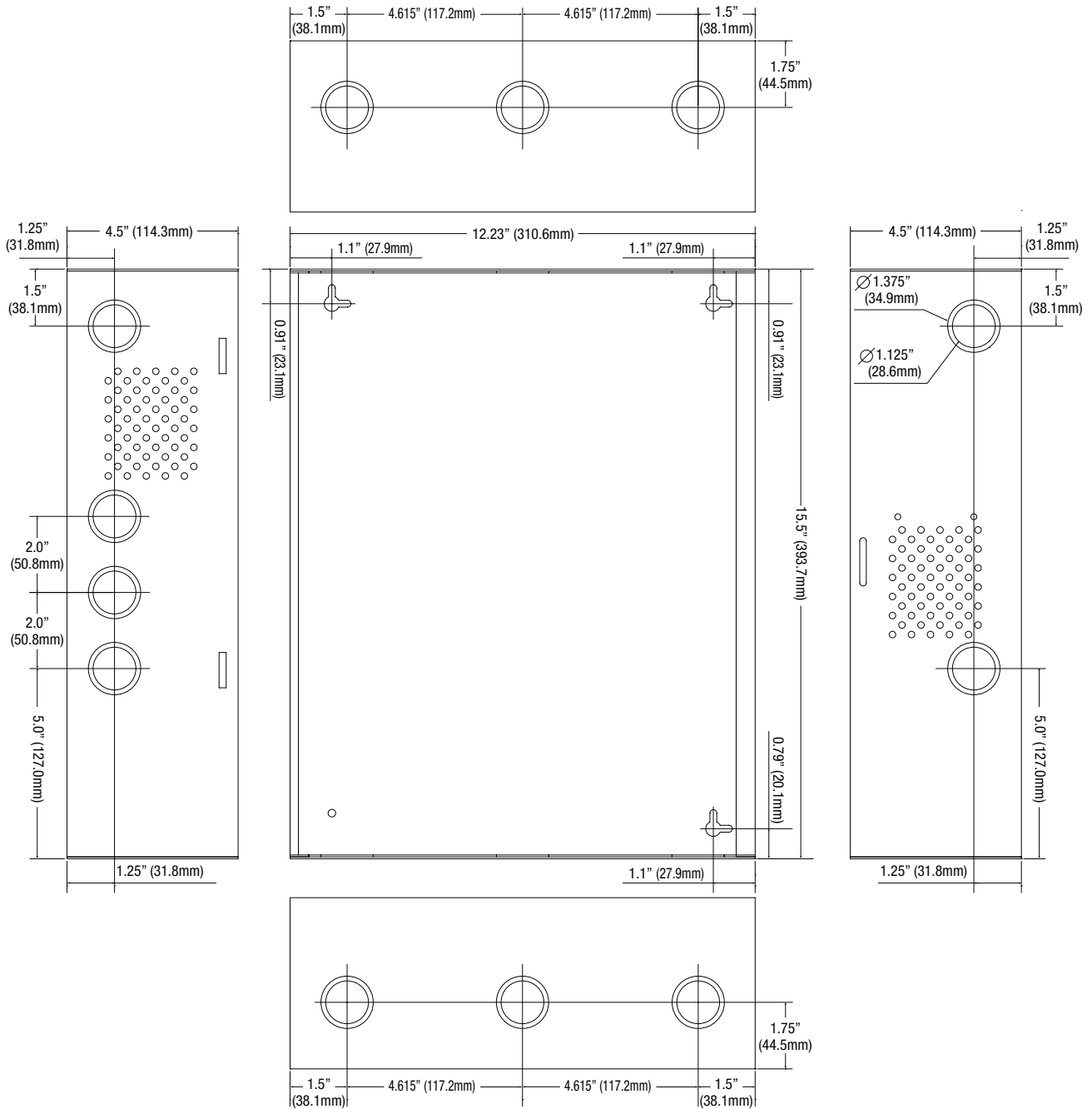
phone: +1 718.567.8181 | fax: +1 718.567.9056 | email: info@altronix.com | www.altronix.com

AL300X220 Series

Power Supply/Chargers

Dimensions and Drawing

AL300XX220, AL300XPD4(CB)220, AL300XPD8(CB)220, AL300XPD16(CB)220 Dimensions (H x W x D approximate)
15.5" x 12" x 4.5" (393.7mm x 304.8mm x 114.3mm)



Lifetime Warranty

Altronix Corporation | 140 58th St | Brooklyn, NY 11220 USA

phone: +1 718.567.8181 | fax: +1 718.567.9056 | email: info@altronix.com | www.altronix.com

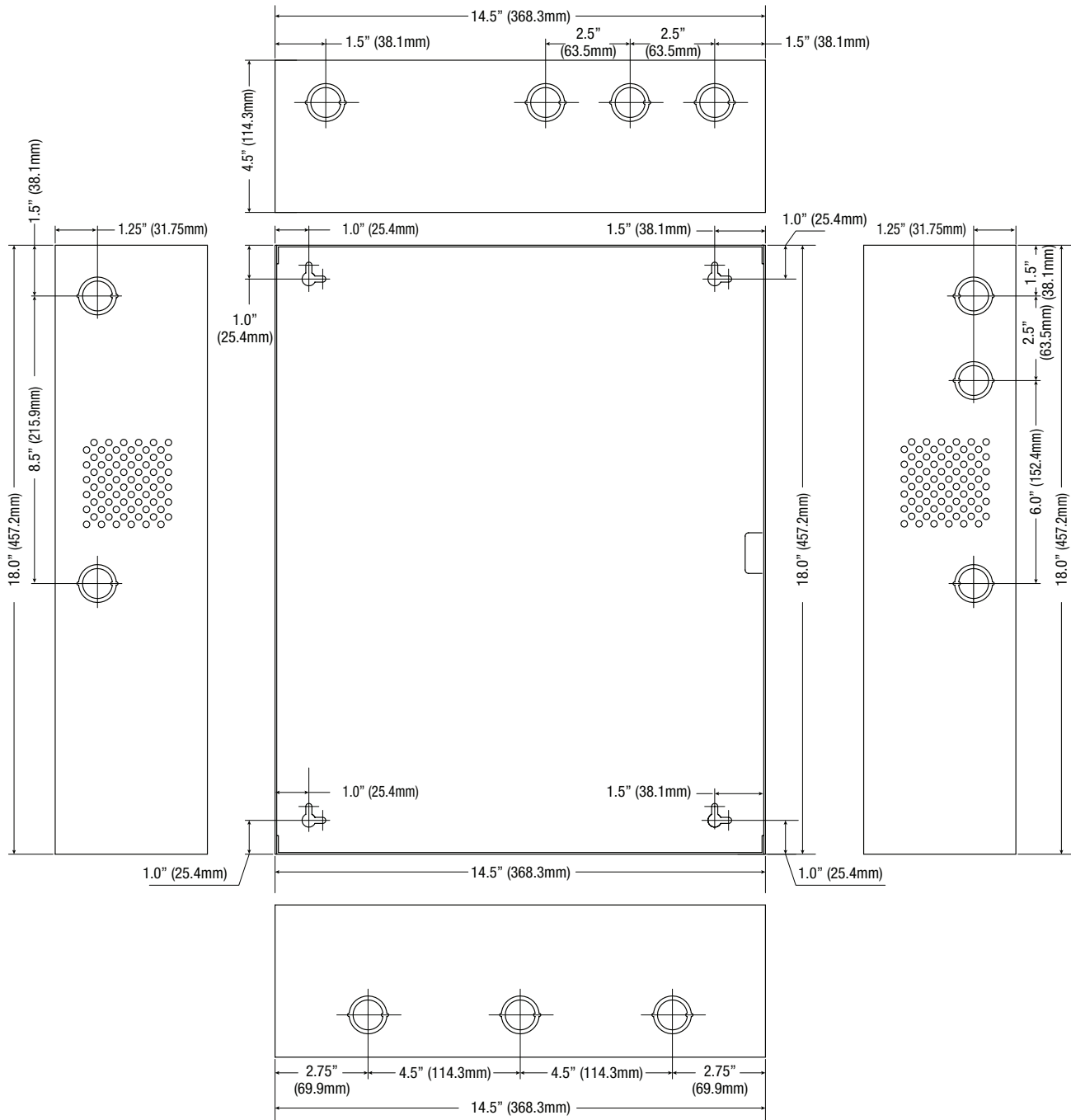
AL300X220 Series

Power Supply/Chargers

Dimensions and Drawing

AL300XJ220 Dimensions (H x W x D approximate)

18" x 14.5" x 4.625" (457.2mm x 368.3mm x 117.5mm)



Lifetime Warranty

Altronix Corporation | 140 58th St | Brooklyn, NY 11220 USA

phone: +1 718.567.8181 | fax: +1 718.567.9056 | email: info@altronix.com | www.altronix.com