

ALTV1224C220

AC/DC Dual Output Power Supply

Installation Guide



More than just power.™

Rev. 082902

Installing Company: _____ Service Rep. Name: _____

Address: _____ Phone #: _____

Overview:

Altronix ALTV1224C220 AC/DC Dual Output Power Supply is designed to provide both 12VDC and 24VAC outputs where a combination of both AC and DC outputs are required.

It provides eight (8) 3.5A 12VDC outputs and eight (8) 3.5A 24VAC outputs.

Specification:

Input:

- 220VAC, 50/60 Hz, 0.79A.

Output:

- 7A total continuous output current.
- Sixteen (16) individually fused outputs (8 outputs @ 12VDC and 8 outputs @ 24VAC) (Fig. 1).
- 3.5A continuous supply current at 12VDC.
- 3.5A continuous supply current at 24VAC.
- Filtered and electronically regulated outputs.
- Short circuit and thermal overload protection.

Fuse Ratings:

- Output fuses are rated at 3.5A / 250VAC.
- Main fuses are rated at 5A / 250VAC (Fig. 1).

Visual Indicators:

- AC input and DC output LED indicators.

Features:

- Power ON/OFF switch.
- Spare fuses included.
- Unit maintains camera synchronization.
- Ease of installation saves time and eliminates costly labor.

Enclosure Dimensions (H x W x D approx.):

- 15.5" x 12" x 4.5"
(393.7mm x 304.8mm x 114.3mm).
- Enclosure accommodates up to two (2) 12AH batteries.

Installation Instructions:

1. Mount unit in the desired location. Mark and predrill holes in the wall to line up with the top two keyholes in the enclosure. Install two upper fasteners and screws in the wall with the screw heads protruding. Place the enclosure's upper keyholes over the two upper screws; level and secure. Mark the position of the lower two holes. Remove the enclosure. Drill the lower holes and install two fasteners. Place the enclosure's upper keyholes over the two upper screws. Install the two lower screws and make sure to tighten all screws (Enclosure Dimensions, pg. 4). Secure enclosure to earth ground.
2. Slide switch SW1 (Fig. 1) to the OFF position.
3. Connect unswitched AC circuit (220VAC, 50/60Hz) as follows: Green branch wire (ground) connects to the terminal marked \ominus , Line connects to the terminal marked [L], and Neutral connects to the terminal marked [N] of the Inlet Appliance Connector (Fig. 1).
4. Measure output voltage before connecting devices. This helps avoiding potential damage.
5. Connect devices to the output terminals using the following procedure (Fig. 1):
 - a. Connect each DC device to terminal pairs on DC output board 1 through 8, marked [P (+)] and [N (-)], carefully observing correct polarity.
 - b. Connect each AC device to terminal pairs on AC output board 1 through 8, marked [P (+)] and [N (-)].
6. When batteries are being used, the DC output voltage must be adjusted by turning the trim pot VR1 (Fig. 1) clockwise to increase the output voltage to 13.7 VDC. Connect battery to the terminals marked [- BAT +] (Fig. 1) on the unit (battery leads included).

CAUTION: Determine the maximum operating voltage of the equipment being powered before adjusting the output voltage. When the battery charging voltage is increased, the DC output voltage will also increase.
7. Slide switch SW1 (Fig. 1) to the ON position.
8. Green LED on the PD8s will illuminate when power is present.
9. Upon completion of the wiring secure enclosure door with screws (supplied).

**Caution: Equipment to be installed / serviced by authorized / trained personnel only.
Shut branch circuit power before installing / servicing equipment.**

WARNING: To reduce the risk of fire or electric shock, do not expose the unit to rain or moisture. This installation should be made by qualified service personnel and should conform to the National Electrical Code and all local codes.

Terminal Identification:

SMP5 - Power Supply Board

Terminal Legend	Function/Description
AC / AC	Low voltage AC input (24VAC / 175VA / 220VAC).
+ DC -	12VDC 3.5A total continuous output.
- BAT +	Stand-by battery connections. Maximum charge rate 0.5A.

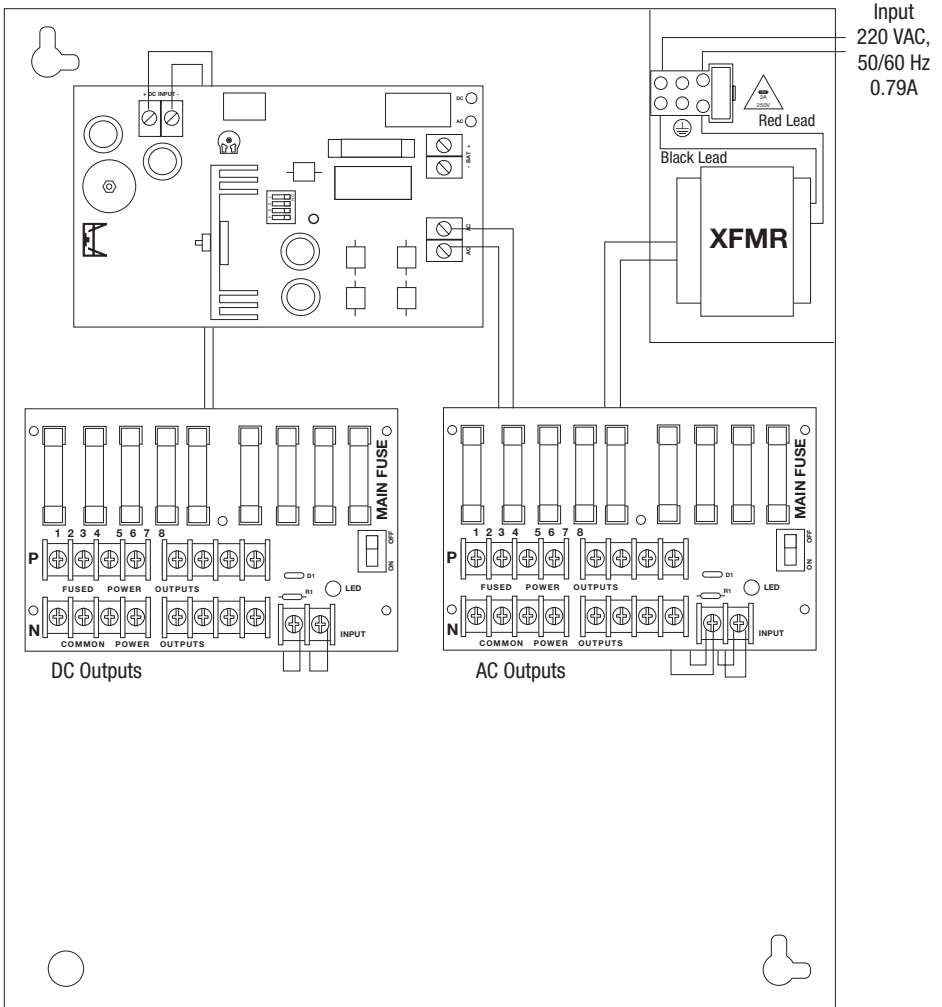
PD8(CB) - DC Output

1P - 8P	Positive DC power outputs.
1N - 8N	Negative DC power outputs.

PD8(CB) - AC Output

1P - 8P	AC power outputs.
1N - 8N	AC power outputs.

Fig. 1 - ALTV1224C220





The lightning flash with arrowhead symbol within an equilateral triangle is intended to alert the user to the presence of an insulated DANGEROUS VOLTAGE within the product's enclosure that may be of sufficient magnitude to constitute an electric shock.



The exclamation point within an equilateral triangle is intended to alert the user to the presence of important operating and maintenance (servicing) instructions in the literature accompanying the appliance.



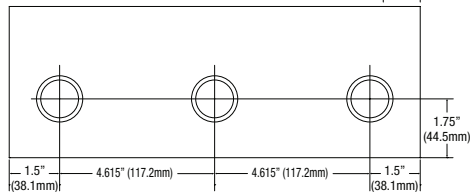
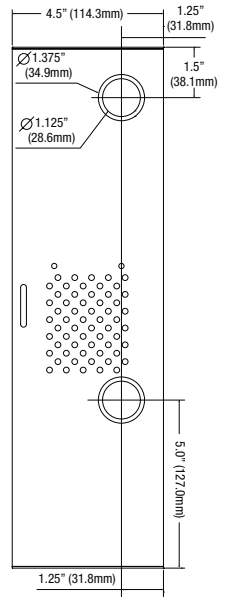
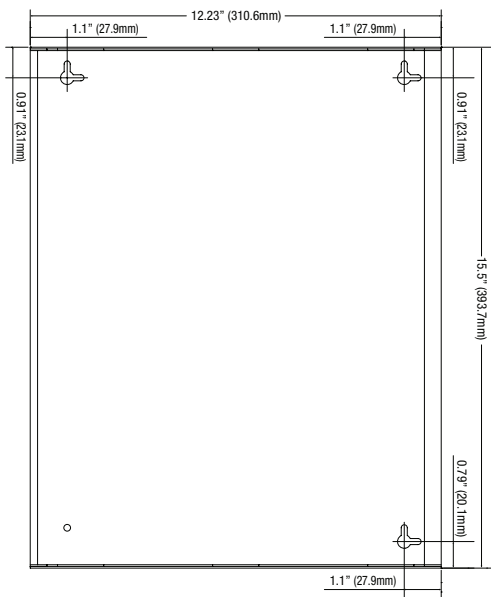
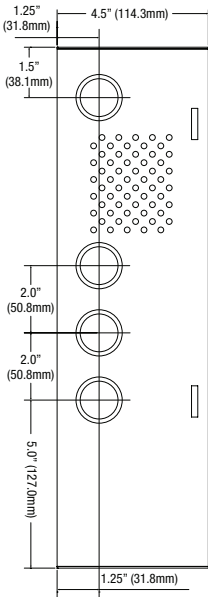
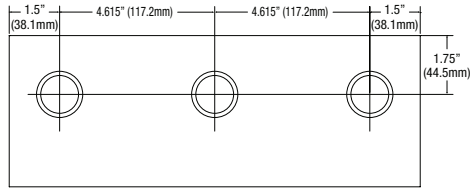
CAUTION
RISK OF ELECTRIC SHOCK
DO NOT OPEN



CAUTION: To reduce the risk of electric shock do not open enclosure. There are no user serviceable parts inside. Refer servicing to qualified service personnel.

Enclosure Dimensions:

15.5" x 12" x 4.5" (393.7mm x 304.8mm x 114.3mm)



Altronix is not responsible for any typographical errors.

140 58th Street, Brooklyn, New York 11220 USA | phone: 718-567-8181 | fax: 718-567-9056
 website: www.altronix.com | e-mail: info@altronix.com | Lifetime Warranty
 IIIALTV1224C220 J26U



MEMBER