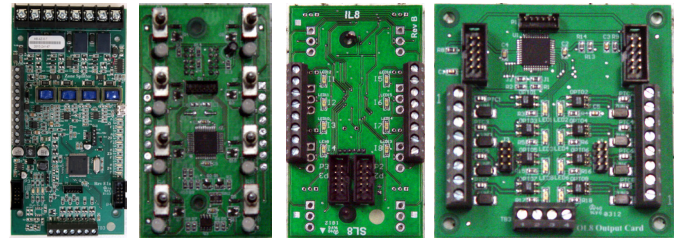


PVX Accessory Cards

- PVX-ZM – Supervised Zone Module
- PVX-SL8 – LED Switch Card
- PVX-IL8 – LED Input Card
- PVX-OL8 – LED Output Card
- All cards connect and communicate over 10 pin ribbon cable
- Up to 16 total cards per panel in any combination



PVX-ZM

PVX-SL8

PVX-IL8

PVX-OL8



PVX-ZM

Stock Number: 3510014

Supervised Zone Module

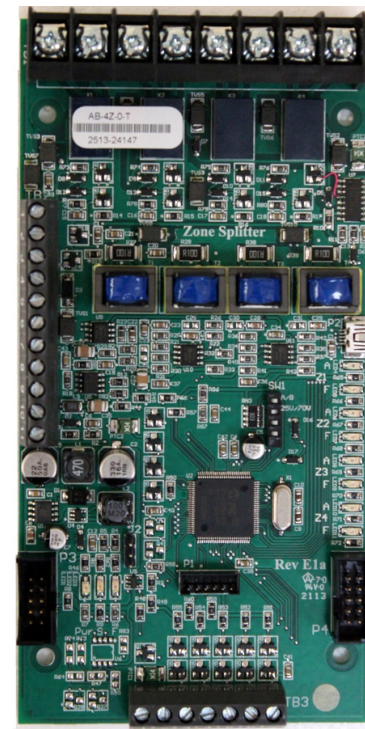
Current draw (24VDC input): 51mA (Standby), 130mA (All Call)

- 4 Class B or 2 Class A speaker circuits (Field selectable)
- 25/70 Vrms Field selectable
- Compatible with PVX-SL8 for zone selection
- Circuits rated up to 50W @ 70V and 40W @ 25V
- Circuits rated up to 50W @ 70V and 40W @ 25V

The Potter PVX-ZM Supervised Zone Module is used in conjunction with the PVX Series Voice Evacuation Panels to provide separately supervised and protected circuits from a single speaker output. The EVX-ZM is default configured for 4 Class B circuits, but may be converted to 2 Class A with the flip of a switch. The PVX-ZM can be ganged together to provide a maximum of 64 Class B circuits.

The PVX-ZM in standard operating mode is strictly All Call. On any page, alarm, or message function all circuits activate. If separate zoning is required, the PVX-ZM has zone selection inputs which may be activated by a N.O. dry contact. Additionally, the PVX-SL8(LED Switch Card) may be employed to provide both Zone and Message selection by switch.

Each speaker circuit employs smart power metering to insure short circuit conditions are isolated from the other circuits. Each circuit is rated 50W @ 70V and 40W @ 25V.



PVX-SL8

Stock Number: 3510015

LED Switch Module

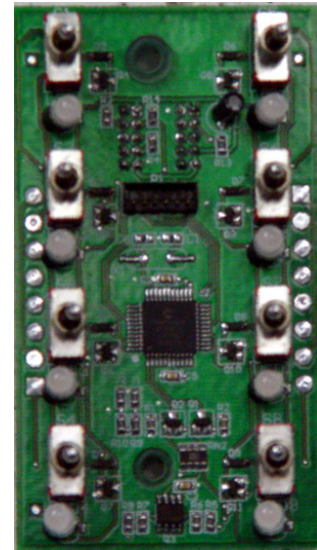
Current draw (On primary module battery back-up): 3mA (Standby), 5.16mA (All Call)

- 8 Momentary switches
- 8 Tri-color LED's (green/red/amber)
- Programmable for multiple functions

The Potter PVX-SL8 LED Switch Module provides switch selection for message activation, paging, and control functions.

When used in conjunction with the PVX-ZM zone module, the SL8 can be programmed for page zone control. LEDs for switches assigned to page zones will indicate Red for page and flashing Red for alarm. The LED will indicate Amber if the associated speaker circuit is in a fault condition.

Switches can be programmed to control corresponding points on the PVX-OL8. Switch LEDs will indicate steady Red on activation.



PVX-IL8

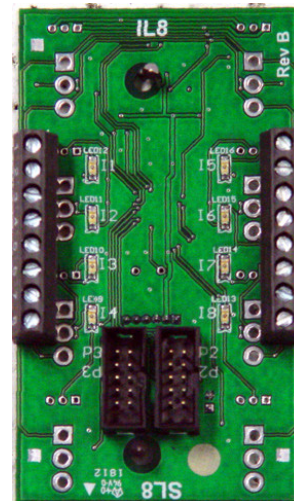
Stock Number: 3510016

LED Input Module

Current draw (On primary module battery back-up): 3mA (Standby): 5.2mA (All Call)

- 8 Input points
- 8 Red LED's
- Programmable for multiple functions

The Potter PVX-IL8 LED Input Module can be used for page zone control, message selection, and control functions. The inputs monitor an external N.O dry contact. PVX-IL8's are typically used for message/zone activation from an outside system such as Severe Weather Warnings. They can also be used to activate corresponding outputs on the PVX-OL8. On activation, the corresponding LED will indicate red.



PVX-OL8

Stock Number: 3510017

LED Output Module

Current draw (On primary module battery back-up): 3mA (Standby), 28mA (All Call)

- 8 Input points
- 8 Red LED's
- N.O. Dry contacts rated at 30mA @ 0-24VDC

The PVX-OL8 LED Output Module provides solid state N.O. dry contacts. It can also be separately tied to a voltage (0-24VDC), with that voltage used as a drive point or trigger. Outputs 1-4 and 5-8 may use different voltage references if desired. The PVX-OL8 outputs may be programmed to follow message activation, page zones, or specific functions like PTT, alarm, or control.

