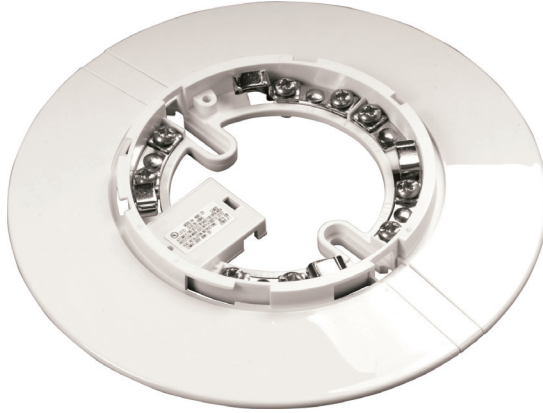


Series 65A

E-Z Fit Base - 6"



Technical data

Standards and approvals	UL, ULC, CSFM, MSFM
Dimensions	6.34 in. (161 mm) diameter x 0.62 in. (16 mm) height.
Weight	3.53 oz (100 g)
Materials	Housing: White flame retardant polycarbonate Terminals: Nickel plated stainless steel

Product overview

Product Type	E-Z Fit Base - 6"
Part No.	45681-251

Compliance



Product information

The Series 65A E-Z Fit Base is an ultra-low profile mounting base for Series 65A smoke and heat detectors and can be fitted to mounting boxes up to four inches in size.

The E-Z Fit Base is designed so that both screws of a four inch box can be loosely fitted to it before offering it up to the box. In the case of smaller boxes one screw is fitted first.

The screws are concealed in use by hinged covers which are closed after tightening the fixing screws.

The detector head locks the hinged covers when closed and the detector head can be locked into the base using the standard locking screw.

The E-Z Fit Base offers a very high degree of protection against the unauthorized removal of detectors.

This page has intentionally been left blank