

# E3 Series® Combined Fire/MNS System

## Combined Fire and MNS System

### General

The Gamewell-FCI®, E3 Series® Broadband Emergency Voice Evacuation System and the E3 Series Broadband Networked Fire Alarm System can be combined on the common network to form a combination Fire and Mass Notification (MNS) System in accordance with the NFPA and UL Standard UL2572 requirements. The E3 Series modules, nodes and control panels are peer-to-peer, self-regenerating, token ring passing networks consisting of either of the following:

- 2 to 64 nodes
- up to 122 nodes with the addition of an ANX

**Note:** The ANX is used for Fire applications only.

The E3 Series System is a modular design. This adaptable design allows a wide range of configurations to form an integrated, distributed fire alarm system in combination with the audio evacuation for use with both Fire and Mass Notification functions. In addition, the design can be used as a dedicated, standalone Mass Notification System without a fire alarm service.

The network communication conveys all of the following Fire Alarm and Mass Notification control functions:

- Audio evacuation
- Voice paging
- Fire fighter communications over a single pair of wires or fiber-optic cable

A Region contains only one ACU (Autonomous Control Unit), and multiple LOCs (Local Operating Consoles). Speaker circuits cannot be shared by Regions. The individual node types and modules in the E3 Series System family are interconnected to form the ACU and the LOC panels for Mass Notification as well as the following:

- Fire Command
- Control and Detection
- AV Signaling
- Audio functional units within the overall network system

## FEATURES & BENEFITS

- Listed under ANSI/UL® Standard UL2572 for Mass Notification
- Listed under ANSI/UL Standard 864, 9th Edition
- IBC Seismic Certified
- Includes a cost-effective, supervised, "Style 7" network wiring using a single pair of wire or fiber-optics at 625K baud
- Uses fully supervised wiring outputs for outstanding protection
- Offers the Base Platform for the Emergency Communications System. Provides true, seamless and scalable integration for Fire and Mass Notification that is configured applying the E3 Series building blocks using up to 122 nodes
- Stores distributed, digital message storage at each audio amplifier location for maximum survivability
- Contains a compact, Local Operating Console (LOC) that is designed for installation in lobbies, doorways and hallways allowing quick access to do the following:
  - Broadcast MNS announcements
  - View the System Status messages
- Designed with a user-friendly, color touchscreen display that provides all Fire and MNS Events at all locations
- Installs a simple configuration of multiple LOCs with expandability from 16 to 64 programmable switches for status, message activation and control
- Broadcasts a digital, audio, resonant sound to meet the intelligibility requirements
- Supports each audio node with up to 150 watts of audio power, provided by three, 50 watt amplifiers in addition to providing 50 watts of standby power
- Applies Advanced Boolean Logic programming to reduce equipment costs by providing software solutions to complex configurations using the following devices
  - Timers
  - Sequencing
  - Schedulers



*E3 Series Combined Fire and MNS System*

Figure 1 illustrates the E3 Series, In-Building MNS configuration setup.

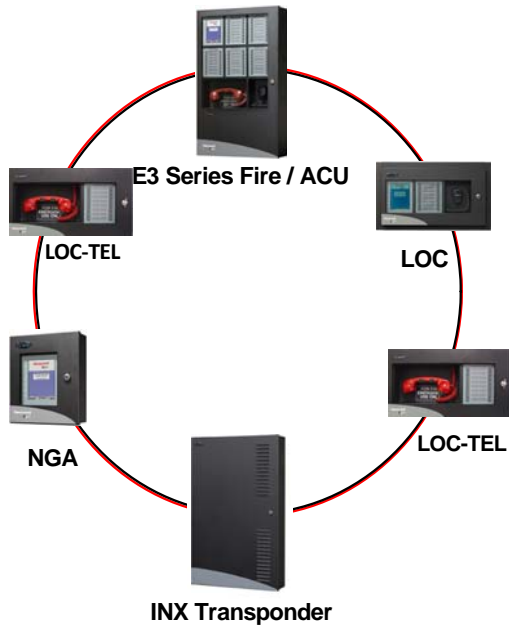


Figure 1 E3 Series, In-Building, MNS Setup

Figure 2 shows the cabinet configurations that can be used in the Mass Notification System.

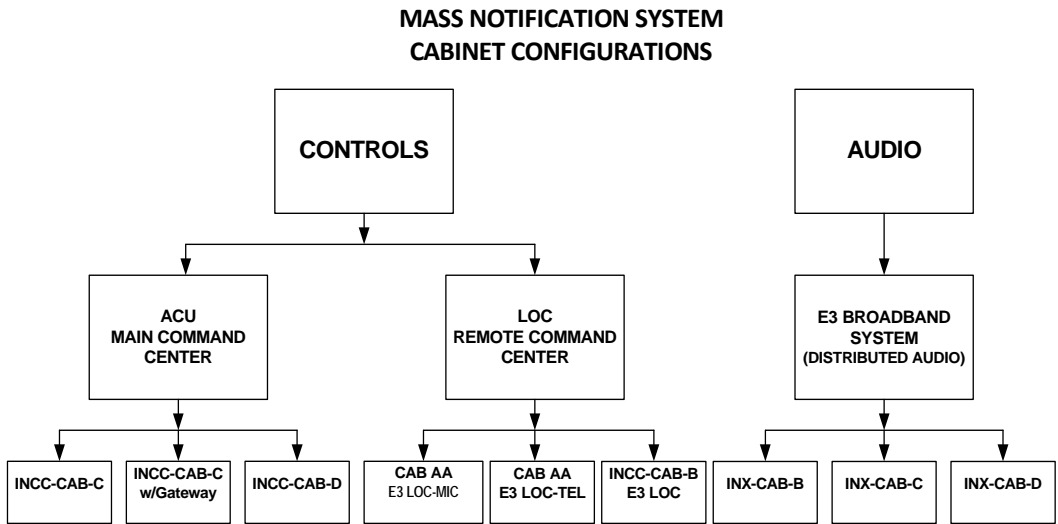


Figure 2 Mass Notification System Cabinet Configurations

## Ordering Information

### E3 Cabinets and Remote Cabinets for MNS

Part Number	Description	Part Number	Description
<b>REMOTE "AA" CAB SIZE</b>		<b>REMOTE "AA" CAB SIZE</b>	
<b>Part Number</b>	<b>Description</b>	<b>Part Number</b>	<b>Description</b>
<b>REMOTE "AA" CAB SIZE</b>	Replaces E3BB-BA	<b>CABINET "C" SIZE</b>	
<b>Dimensions:</b>	19 1/4" W x 10" H x 4 1/2" D (49 W x 25 H x 11 D cm)	<b>Dimensions:</b>	19 3/8" W x 30" H x 4 1/2" D (49 W x 76 H x 11 D cm)
<b>E3BB-BAA</b>	Enclosure, LOC, "AA" Size, Black	<b>E3BB-BC/INCC</b>	Enclosure, Combination Fire/ACU Black "C" Size
<b>E3BB-RAA</b>	Enclosure, LOC, "AA" Size, Red	<b>E3BB-RC/INCC</b>	Enclosure, Combination Fire/ACU Red "C" Size
<b>E3ID3-A</b>	Assembly, Door, Inner, 3 Slots, "AA" (NGA, ASM-16 and MIC)	<b>E3BB-BC/INX</b>	Enclosure, Transponder, "C" Size, Black
<b>E3ID2-TA</b>	Assembly, Door, Inner, 2 Slots, "AA" (INCC-TEL and ASM-16)	<b>E3BB-RC/INX</b>	Enclosure, Transponder, "C" Size, Red
<b>90510</b>	Kit, AOM-TEL Plate, E3 (LOC)		
<b>90492</b>	Thumb Lock		
<b>REMOTE "AA1 &amp; A2" CAB SIZE</b>		<b>MOUNTING PLATE, "C" CAB</b>	
<b>Remote "AA1 &amp; A2" CAB</b>		<b>E3-INCC-CPLATE</b>	ACU Command Center Module Mounting Plate, "C" Size
<b>Remote "AA1" CAB</b>	Replaces E3BB-BA1	<b>E3-INX-CPLATE</b>	Transponder Module Mounting Plate "C" Size
<b>Dimensions:</b>	8 3/4" W x 10" H x 4 1/2" D (22.2 W x 25 H x 11 D cm)		
<b>E3BB-BAA1</b>	Enclosure, "AA1" Size, Black	<b>INNER DOOR, "C" SIZE</b>	
<b>E3BB-RAA1</b>	Enclosure, "AA1" Size, Red	<b>E3ID3-C</b>	Assembly, Door, Inner, 3-Bay, "C" Size
<b>Remote "A2" CAB</b>			
<b>Dimensions:</b>	13 1/4" W x 10" H x 4 1/2" D (40 W x 25 H x 11 D cm)	<b>CABINET "D" SIZE</b>	
<b>E3BB-BA2</b>	Enclosure, "A2" Size, Black (Deep)	<b>Dimensions:</b>	19 3/8" W x 41" H x 4 1/2" D (49 W x 104 H x 11 D cm)
<b>E3BB-RA2</b>	Enclosure, "A2" Size, Red (Deep)	<b>E3BB-BD/INCC</b>	Enclosure, Combination Fire/ACU Black "D" Size
<b>Flush Cabinet A2 Annunciators</b>		<b>E3BB-RD/INCC</b>	Enclosure, Combination Fire/ACU Red "C" Size
<b>E3BB-NGA-FLUSH</b>		<b>E3BB-BD/INX</b>	Enclosure, Transponder, "D" Size, Black
<b>CAB A2 Remote Flush NGA ANN with Password Protection</b>		<b>E3BB-RD/INX</b>	Enclosure, Transponder, "D" Size, Red
<b>E3 SERIES CABINETS "B", "C", "D" SIZES</b>			
<b>CABINET "B" SIZE</b>		<b>MOUNTING PLATE "D" CAB</b>	
<b>Dimensions:</b>	19 3/8 W x 19 3/8" H x 4 1/2" D (49 W x 49 H x 11 D cm)	<b>E3-INCC-DPLATE</b>	ACU Command Center Module Mounting Plate, "D" Size
<b>E3BB-BB</b>	Enclosure, LOC "B" Size, Black	<b>E3-INX-DPLATE</b>	Transponder Module Mounting Plate, "D" Size
<b>E3BB-RB</b>	Enclosure, LOC "B" Size, Red		
<b>1100-0453</b>	INCC-IDT, Inner Door with 2 Slots, INCC-TEL LOC	<b>INNER DOOR, "D" SIZE</b>	
<b>1100-0454</b>	INCC-ID-6, Inner Door with 6 Slots, INCC-CAB-LOC	<b>E3ID3-D</b>	Assembly, Door, Inner, 3-Bay, "D" Size
<b>1100-0460</b>	INX-CAB, Enclosure, Transponder, B Size, Black	<b>OPTIONAL EXTENDER PLATE</b>	
<b>1100-0461</b>	INX-CAB-R, Enclosure, Transponder, B Size, Red	<b>AM-50 Plate</b>	AM-50 Extender Plate
		<b>E3 SERIES TRIMKIT</b>	
		<b>E3-TRIMKIT-A</b>	Assembly, FNL, TrimRing, CAB A/AA
		<b>E3-TRIMKIT-A1</b>	Assembly, FNL, TrimRing, CAB AA1
		<b>E3-TRIMKIT-A2</b>	Assembly, FNL, TrimRing, CAB A2, E3
		<b>E3-TRIMKIT-B</b>	Assembly, FNL, TrimRing, CAB C, E3
		<b>E3-TRIMKIT-C</b>	Assembly, FNL, TrimRing, CAB C, E3
		<b>E3-TRIMKIT-D</b>	Assembly, FNL, TrimRing, CAB D, E3

# E3 Series® Combined Fire/MNS System Technical Specifications

## SYSTEM

**Device Loops:** Up to two Class A or B, System Sensor units, each loop supports up to 318 device addresses.

OR-

Apollo units, each loop supports up to 126 device addresses per loop.

**NAC Circuits:** 4 Class B or 2 Class A (2.0 A each circuit), 6.0 A total

**NAC Operating Voltage:** 24 VDC

**NAC Minimum Voltage:** 19.5 VDC @ 20.4 V battery voltage

**SLC Loop Circuit Operating Voltage:** 24 V peak-to-peak

**Input Voltage:** 120 VAC, 60 Hz 240 VAC 50-60 Hz

**Input Current:** 120 VAC, 2.75 amps max. 240 VAC, 1.4 amps max.

**Aux Power (Resettable):** Two Auxiliary circuits, 24 VDC, 1.75 A

**Aux Power:** Supervised, Class 2 Power-Limited (Non-Resettable): (maximum current of 1.75 is shared between two circuits).

**Base Panel Current Draw:**

Standby: 0.111 amps

Alarm: 0.243 amps

**Operating Temperature:** 32°-120° F (0°-49° C)

**Relative Humidity:** 93% (non-condensing)

**Battery Charger Voltage:** +24 VDC

**Battery Charger Capacity:** 55 A/H batteries (cabinet accommodates 12 A/H batteries)

**Alarm, Trouble & Supervisory Relay Contacts:** Form-C, 2 amps @ 24VDC (resistive)

**Cabinet Dimensions:**

**SLP-BB Dimensions:** 14 1/2"Wx20 1/8"Hx4 1/2" D  
(36.83W x 51.18 H x 11.43 D cm)

**S3BB-RB Dimensions:** 19 3/8"Wx19 3/8"Hx4.5" D  
(49.22 W x 49.22 H x 11.43 D)

## TEMPERATURE AND HUMIDITY RANGES

This system meets NFPA requirements for operation at 0 – 49°C/32 – 120°F and at a relative humidity 93% ± 2% RH (non-condensing) at 32°C ± 2°C (90°F ± 3°F). However, the useful life of the system's standby batteries and the electronic components may be adversely affected by extreme temperature ranges and humidity. Therefore, it is recommended that this system and its peripherals be installed in an environment with a normal room temperature of 15 – 27°C/60 – 80°F.

## For more information

Learn more about Gamewell-FCI's E3 Series® Combined Fire/MNS System and other products available by visiting [www.Gamewell-FCI.com](http://www.Gamewell-FCI.com)

## Honeywell Gamewell-FCI

12 Clintonville Road  
Northford, CT 06472-1610  
203.484.7161  
[www.honeywell.com](http://www.honeywell.com)

## STANDARDS

The E3 Series Combined Fire/MNS System is designed to comply with the following standard:

**UL Standard:** 864 9th Edition

## AGENCY LISTINGS AND APPROVALS

These listings and approvals apply to the modules specified in this document. In some cases, certain modules or applications may not be listed by certain approval agencies, or listing may be in process. Consult the factory for the latest listing status.

**UL Listed:** S1869

**FM Approved**

**MEA FDNY:** COA 6162

**CSFM:** 7165-1703:0176

**City of Chicago Approved:** Class 1

**Reference Certificate of Compliance:**  
VMA 45894-02C

**ISO 9001 Certification**

For a complete listing of all compliance approvals and certifications, please visit:

<http://www.gamewell-fci.com/en-US/documentation/Pages/Listings.aspx>

E3 Series® and Gamewell-FCI® are registered trademarks of Honeywell International Inc.

UL® is a registered trademark of Underwriters Laboratories Inc.

This document is not intended to be used for installation purposes. We try to keep our product information up-to-date and accurate. We cannot cover all specific applications or anticipate all requirements. All specifications are subject to change without notice.