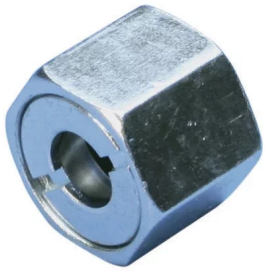




## NVENT CADDY ROD LOCK NUT



### FEATURES

Easy "push-to-install" design allows installers to simply push the threaded rod through the mounting hole, instantly holding it in position

Fast installation onto long threaded rods - push the nut in place instead of threading it up the rod

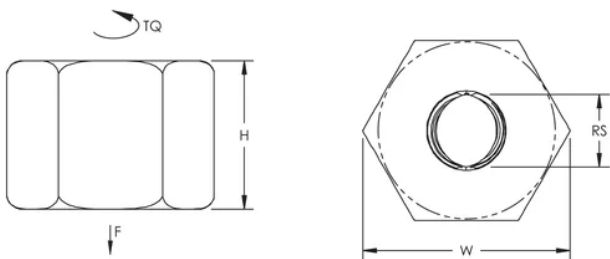
Excellent alignment and easy fine adjustment by spinning the nut

Extremely useful in tight spaces where wrenches are difficult to use

### SPECIFICATIONS

Catalog Number	Material	Finish	Rod Size(RS)	Width(W)	Height(H)	Wrench Size	Torque(TQ)	Static Load(F)
CRLN37EG	Steel	Electrogalvanized	3/8"	1.100"	0.800"	15/16"	5 ft lb	1,350 lb

### DIAGRAMS



### WARNING

nVent products shall be installed and used only as indicated in nVent's product instruction sheets and training materials. Instruction sheets are available at [www.nvent.com](http://www.nvent.com) and from your nVent customer service representative. Improper installation,

misuse, misapplication or other failure to completely follow nVent's instructions and warnings may cause product malfunction, property damage, serious bodily injury and death and/or void your warranty.

**North America**

+1.800.753.9221

Option 1 – Customer Care

Option 2 – Technical Support

**Europe**

Netherlands:

+31 800-0200135

France:

+33 800 901 793

**Europe**

Germany:

800 1890272

Other Countries:

+31 13 5835404

**APAC**

Shanghai:

+ 86 21 2412 1618/19

Sydney:

+61 2 9751 8500



Our powerful portfolio of brands:  
**nVent.com CADDY ERICO HOFFMAN RAYCHEM SCHROFF**  
**TRACER**