



ADJUSTABLE I-BEAM ADAPTER



CERTIFICATIONS



FEATURES

No loose parts

No assembly required

Snap-off bolt head helps enable easy installation and inspection of seismic sway braces

Meets NFPA®-13 requirements for seismic sway bracing

FM® Specification Tested

SPECIFICATIONS

Finish: Electrogalvanized

Material: Steel

Catalog Number	Flange Thickness(FT)	A	Rod Size 1(RS1)	Rod Size 2(RS2)	Width(W)	Height(H)
CSBS3	1/4" - 3/4"	4" - 8 1/2"	3/8"	1/2"	3 5/8"	2 5/8"
CSBS4	1/4" - 3/4"	4" - 14 1/2"	3/8"	1/2"	3 5/8"	2 5/8"
CSBS5	3/4" - 1 1/4"	4" - 18"	3/8"	1/2"	3 5/8"	3 1/8"

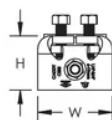
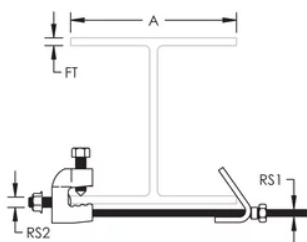
ADDITIONAL PRODUCT DETAILS

Structure Attachment and Brace Member are not included.

FM Loads								
Part Number	Horizontal Capacity per Installation Angle from Vertical							
	Perpendicular to Structure				Parallel to Structure			
	30°- 44°	45°- 59°	60°- 74°	75°- 90°	30°- 44°	45°- 59°	60°- 74°	75°- 90°
CSBS3	1,180 lb	2,210 lb	2,830 lb	2,940 lb	820 lb	1,380 lb	2,080 lb	3,010 lb
CSBS4	1,180 lb	2,210 lb	2,830 lb	2,940 lb	820 lb	1,380 lb	2,080 lb	3,010 lb
CSBS5	1,220 lb	2,140 lb	2,580 lb	2,870 lb	1,100 lb	1,820 lb	2,190 lb	2,680 lb

UL Loads				
Part Number	Structure Attachment Fitting	Flange Thickness	Brace Member	Load Rating
CSBS3	CSBU1	1/4" - 3/8"	1" - 2" Sch. 40 NPS	1500 lb
		3/8" - 3/4"		1700 lb
	CSBURC12	1/4" - 3/4"	CSB12CBL	418 lb
			CSB18CBL	772 lb
			CSB36CBL	1100 lb
	CSBS4	CSBU1	1/4" - 3/8"	1" - 2" Sch. 40 NPS
3/8" - 3/4"			1700 lb	
CSBURC12		1/4" - 3/4"	CSB12CBL	418 lb
			CSB18CBL	772 lb
			CSB36CBL	1100 lb
CSBS5		CSBU1	3/4" - 1-1/4"	1" - 2" Sch. 40 NPS
	CSBURC12	3/4" - 1-1/4"	CSB12CBL	418 lb
			CSB18CBL	772 lb
			CSB36CBL	1100 lb

DIAGRAMS



WARNING

nVent products shall be installed and used only as indicated in nVent's product instruction sheets and training materials. Instruction sheets are available at www.nvent.com and from your nVent customer service representative. Improper installation, misuse, misapplication or other failure to completely follow nVent's instructions and warnings may cause product malfunction, property damage, serious bodily injury and death and/or void your warranty.

North America

+1.800.753.9221

Option 1 – Customer Care

Option 2 – Technical Support

Europe

Netherlands:

+31 800-0200135

France:

+33 800 901 793

Europe

Germany:

800 1890272

Other Countries:

+31 13 5835404

APAC

Shanghai:

+ 86 21 2412 1618/19

Sydney:

+61 2 9751 8500



Our powerful portfolio of brands:
nVent.com CADDY ERICO HOFFMAN RAYCHEM SCHROFF
TRACER