

Class 150 (Standard) Fig. 3110, 3111 and 3112 Plugs



Fig. 3110 (Solid Square) or
Fig. 3111 (Cored Square)



Fig. 3112
(Cored Bar)



For Listings/Approval Details and Limitations, visit our website at www.asc-es.com or contact an ASC Engineered Solutions Sales Representative.

Figure 3110, 3111 and 3112 Plugs

Figure Numbers	Nominal Size In. (mm)	Dimensions			Approx Wt. Each Lbs. (kg)
		A In. (mm)	B In. (mm)	C In. (mm)	
3110 - Solid	1/4 8	0.44 11.18	0.28 7.11	0.38 9.65	0.04 0.02
3110 - Solid	3/8 10	0.48 12.19	0.31 7.81	0.44 11.18	0.06 0.03
3111 - Cored	1/2 15	0.56 14.22	0.38 9.65	0.56 14.22	0.08 0.04
3111 - Cored	3/4 20	0.63 16.00	0.44 11.18	0.63 16.00	0.13 0.06
3111 - Cored	1 25	0.75 19.05	0.50 12.70	0.81 20.57	0.20 0.09
3111 - Cored	1 1/4 32	0.80 20.32	0.56 14.22	0.94 23.88	0.32 0.15
3111 - Cored	1 1/2 40	0.83 21.08	0.62 15.75	1.13 28.70	0.43 0.20
3111 - Cored	2 50	0.88 22.35	0.68 17.27	1.31 33.27	0.67 0.30
3111 - Cored	2 1/2 65	1.07 27.18	0.74 18.80	1.50 38.10	1.11 0.50
3111 - Cored	3 80	1.13 28.70	0.80 20.32	1.69 42.93	1.53 0.69
3112 - Bar	4 100	1.22 30.99	1.00 25.40	- -	2.71 1.23
3112 - Bar	6 150	1.40 35.56	1.25 31.75	- -	4.00 1.81

Material Specifications

Dimensions:

Fittings: ASME B16.3

Unions: ASME B16.39

Bushings/Plugs: ASME B16.14

Material: ASTM A-197

Finish: Black or Hot Dip Galvanized per ASTM A153 Class A

Threads*: NPT per ASME B1.20.1

Pressure Ratings:

Fittings: ASME B16.3

Unions: ASME B16.39

Bushings/Plugs: ASME B16.14

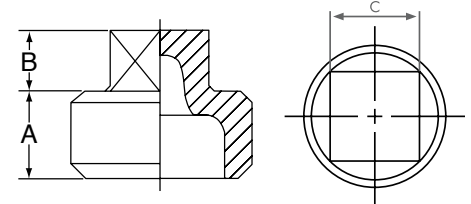
Pressure Testing: All malleable iron fittings are tested for through wall porosity using an air under water process.

Agency Approvals: All malleable iron fittings and unions are UL/ULC Listed and FM Approved.

*British Standard threading per BS 21 available upon request.

Note:

Figures 3110 and 3111 are square head plugs; solid or cored. Figure 3112 are cored bar plugs.



PROJECT INFORMATION	APPROVAL STAMP
Project:	Approved
Address:	Approved as noted
Contractor:	Not approved
Engineer:	Remarks:
Submittal Date:	
Notes 1:	
Notes 2:	