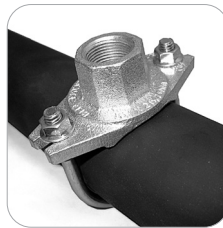
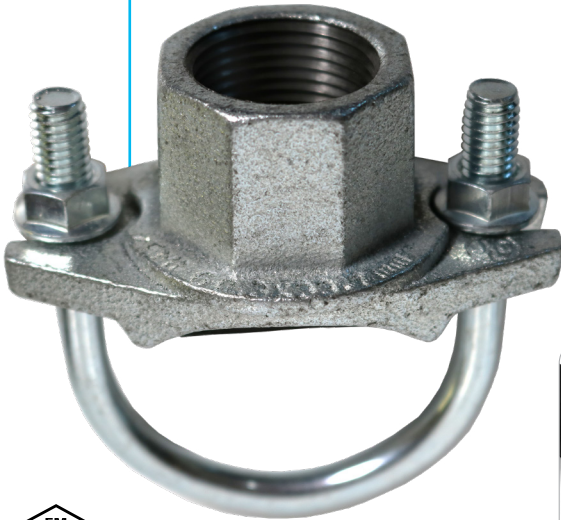


## Threaded Mechanical Branch Tee Fig. MT-30



### Material Specifications

#### Housing

Ductile Iron conforming to ASTM A536, Grade 65-45-12

#### U-Bolts and Nuts

U-bolt is carbon steel SAE J429 Gr. 2, zinc plated complete with hex flanged lock nuts conforming to ASTM A563 Gr. A or B of SAE J995 Gr. 2.

#### Threads

NPT per ANSI/ASME B1.20.1.

#### Coatings

Zinc Electroplated

Other available options

(Example: RAL3000 or RAL9000 Series)

#### Gasket Materials

Properties as designated in accordance with ASTM D2000

**Grade "E" EPDM** (Green color code)

-40°F to 230°F (Service Temperature Range)  
(-40°C to 110°C)

Recommended for water service, diluted acids, alkalies solutions, oil-free air and many chemical services not involving hydrocarbons, oils or gases.

**NOT FOR USE WITH HYDROCARBONS.**

The MT-30 mechanical tee serves the same function as the MT-1 and MT-8, but uses a steel electro-plated u-bolt to save space and for easier installation in tight places. The MT-30 is ideal for direct connections with sprinkler heads and drop nipples. The MT-90 is the BSPT equivalent.

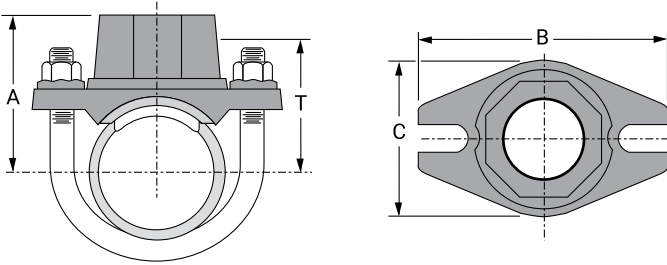
For the latest UL/ULC listed, LPCB, VdS and FM Approved pressure ratings versus pipe schedule, see [www.asc-es.com](http://www.asc-es.com) or contact your local ASC Engineered Solutions™ Representative.

For Listings/Approval Details and Limitations, visit our website at [www.asc-es.com](http://www.asc-es.com) or contact an ASC Engineered Solutions™ Sales Representative.



PROJECT INFORMATION	APPROVAL STAMP
Project:	Approved
Address:	Approved as noted
Contractor:	Not approved
Engineer:	Remarks:
Submittal Date:	
Notes 1:	
Notes 2:	

## Threaded Mechanical Branch Tee Fig. MT-30



Nominal Size	O.D.	Hole Dimensions		Max. Working Pressure ▲	Dimensions				Approx. Wt. Ea.
		Min. Diam.	Max. Diam.		A	B	C	T Take-out	
In./DN(mm)	In./mm	In./mm	In./mm	PSI/bar	In./mm	In./mm	In./mm	In./mm	Lbs./kg
1¼ x ½ 32 x 12	1.660 x 0.840 42.4 x 21.3	1⅜ 30	1⅝ 33	300 20.7	2⅞ 54	3½ 89	2¼ 57.2	1⅝ 42	0.8 0.4
1¼ x ¾ 32 x 19	1.660 x 1.050 42.4 x 26.7	1⅜ 30	1⅝ 33	300 20.7	2⅞ 54	3½ 89	2¼ 57.2	1⅝ 42	0.8 0.4
1¼ x 1 32 x 25	1.660 x 1.315 42.4 x 33.7	1⅜ 30	1⅝ 33	300 20.7	2¼ 58	3½ 89	2¼ 57.2	1⅝ 41	1.1 0.5
1½ x ½ 40 x 12	1.900 x 0.840 48.3 x 21.3	1⅜ 30	1⅝ 33	300 20.7	2¼ 57	3½ 89	2¼ 57.2	1¾ 48	0.8 0.4
1½ x ¾ 40 x 19	1.900 x 1.050 48.3 x 26.7	1⅜ 30	1⅝ 33	300 20.7	2¼ 57	3½ 89	2¼ 57.2	1¾ 48	0.9 0.4
1½ x 1 40 x 25	1.900 x 1.315 48.3 x 33.7	1⅜ 30	1⅝ 33	300 20.7	2⅜ 61	3½ 89	2¼ 57.2	1¾ 48	1.1 0.5
2 x ½ 50 x 12	2.375 x 0.840 60.3 x 21.3	1⅜ 30	1⅝ 33	300 20.7	2½ 64	3¾ 95	2¼ 57.2	2 51	0.9 0.4
2 x ¾ 50 x 19	2.375 x 1.050 60.3 x 26.7	1⅜ 30	1⅝ 33	300 20.7	2½ 64	3¾ 95	2¼ 57.2	2 51	0.9 0.4
2 x 1 50 x 25	2.375 x 1.315 60.3 x 33.7	1⅜ 30	1⅝ 33	300 20.7	2⅝ 67	3¾ 95	2¼ 57.2	2 50	1.1 0.5
2½ x ½ 65 x 12	2.875 x 0.840 73.0 x 21.3	1⅜ 30	1⅝ 33	300 20.7	2¾ 70	4¼ 108	2¼ 57.2	2¼ 57	0.9 0.4
2½ x ¾ 65 x 19	2.875 x 1.050 73.0 x 26.7	1⅜ 30	1⅝ 33	300 20.7	2¾ 70	4¼ 108	2¼ 57.2	2¼ 57	0.9 0.4
2½ x 1 65 x 25	2.875 x 1.315 73.0 x 33.7	1⅜ 30	1⅝ 33	300 20.7	2⅞ 73	4¼ 108	2¼ 57.2	2¼ 56	1.1 0.5

**Note:**

BSP equivalent is available as a MT-90.

▲ - Working Pressure Ratings are for reference only and based on Sch. 10 and Sch. 40 pipe. For the latest UL/ULC, FM, VdS and LPCB pressure ratings versus pipe schedule, please visit [asc-es.com](http://asc-es.com) or contact your local ASC Engineered Solutions™ Representative.

Note: Tighten nuts alternately to a recommended torque of 18–22 ft.-lbs. (25–30 Nm) on pipe wall less than schedule 10 (Din 2440) or 23–27 ft.-lbs. (31–37 Nm) on pipe walls schedule 10 (DIN 2440) and above.

**Warning:** For dry pipe systems and freezer applications lubrication of the gasket is required, Gruvlok Xtreme Lubricant is required.



[asc-es.com](http://asc-es.com)

Building connections that last™

## Fig. MT-30 Threaded Mechanical Branch Tee

### 1 Alignment

Align the gasket and fitting above the 1.19" (30mm) pipe hole.

Branch Size	Hole Saw Size	Equivalent Pipe Length
Inches (mm)	Inches $+\frac{1}{8}, -0$ (mm $+3, -0$ )	(See Note)
$\frac{1}{2}$ - 1	1.19	5
12 x 25	30.23	1.52

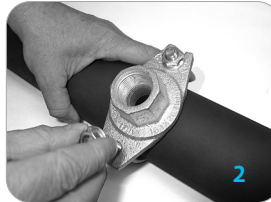
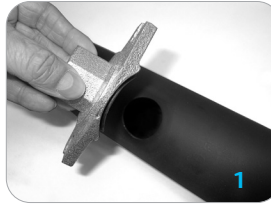
**Note:** Flow Data is expressed as Feet/Meters of Schedule 40 steel outlet pipe with a "Hazen-Williams coefficient of friction value of 120".

### 2 Housing Assembly

Attach the U-bolt from the other side and fasten the nuts finger tight.

### 3 Tighten Nuts

Making sure the fitting is properly located over the pipe hole, use a  $\frac{9}{16}$ " (14 mm) wrench to tighten the nuts alternatively to a recommended torque of 18-22 ft.-lbs. (25-30 Nm) on pipe wall less than schedule 10 (DIN 2440) or 23-27 ft.-lbs. (31-37 Nm) on pipe walls schedule 10 (DIN 2440) and above.



### Specified Bolt Torque

Specified bolt torque is for the u-bolt used on SPF threaded mechanical branches. The nuts must be tightened alternately and evenly until fully tightened.

**Caution:** Proper torquing of mechanical branch u-bolt is required to obtain specified performance. **Over torquing the u-bolt may result in damage to the pipe and/or casting which could result in pipe joint separation.** Under torquing the u-bolt may result in lower pressure retention capabilities, lower bend load capabilities, joint leakage and pipe joint separation. Pipe joint separation may result in significant property damage and serious injury.



asc-es.com

Building connections that last™