

UL Listed: For use with the PFC-4410RC Series
Dimensions: 3 1/4" X 3 1/4" X 4"
Weight: .315 lb.
Assembly: Socketed relay in plastic mounting track
Power Requirements: 40mA at 24VDC
Contact Ratings:
 Each relay has 4PDT contacts,
 Rated at 10 amps resistive,
 120/240VAC, 0-30VDC

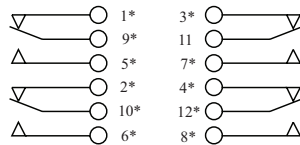
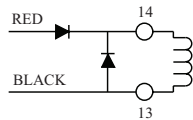
Stock number: 3004726

When the ARM-1 is used the additional power required for this relay module must be subtracted from the total circuit current available. The ARM-1 Auxiliary Relay Module is a non-supervised 4PDT Relay

designed to be activated by 24VDC Indicating and/or Releasing, polarity reversing circuits. The module can be used for fan shutdown, door release, elevator recall, etc.

Wiring

18" WIRE LEADS
FURNISHED FOR
RELAY COIL

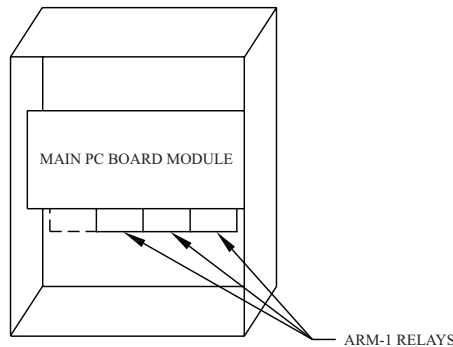


* NUMBERS REFER TO
SOCKET TERMINALS
NOT RELAY PINS.

RELAY SHOWN DE-ENERGIZED

DWG# 1134-1

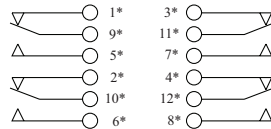
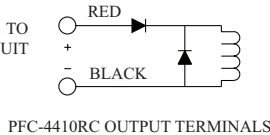
Placement In PFC-4410RC Series Control Unit



ARM-1/PFC-4410RC Installation Hook-Up Diagram

All relays shown in non-activated condition

CONNECT ARM-1 TO
OUTPUT CIRCUIT



DWG# 1134-2

Notes:

- * Numbers refer to socket terminals not relay pins.
- Auxiliary relay operation is determined by programming of the PFC-4410RC panel. Consult the appropriate manual for further information.