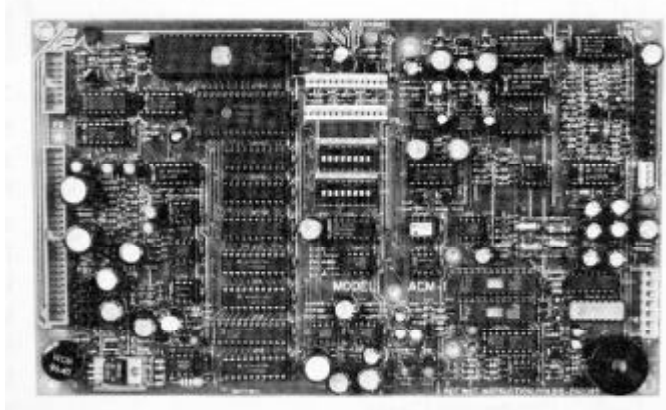


ACM-1

MXLV Audio Control Module

ENGINEER AND ARCHITECT SPECIFICATIONS

- Backup Tone On Board
- Central Controller For Audio System
- Local Trouble Audible and LED
- Network Communication Diagnostic LED
- Supervised Microprocessor Controlled Signal Generator
- Supervised Microphone Pre-amplifier w/ Backup
-  Listed, ULC Listed, FM, NYMEA, CSFM, City Of Chicago



Description

The ACM-1 is an MXLV module which acts as the audio system master controller. It controls all audio related functions.

The ACM-1 includes a local audible and on-board amber LED for indication of ACM troubles. These troubles will also be indicated on the MKB-2 display. An on-board amber LED is also supplied for monitoring MXL network polling.

The ACM-1 has a microprocessor controlled signal generator with a complete set of available tones, selectable using MXL's **AccuLINK** system programming software. The tones are fully supervised and a connector is provided for the addition of a BTC-1 backup tone generator when required. Tones available are:

Slow Whoop
 900 Hz
 900 Hz @ 120 PPM
 900 Hz @ 30 PPM
 Chime
 4-4-4
 California Code
 Yeow
 Yelp
 Wail
 Hi/Lo

2 KHz
 Temporal Code 3
 System Coded Audibles

The ACM-1 also includes a microphone preamplifier for use with the MMM-1 microphone master module. The preamplifier uses an automatic gain control circuit to assure distortion free live voice announcements. A backup pre-amplifier is supplied with automatic transfer if the pre-amp fails. When the microphone key switch is pressed, the ACM-1 can send the adjustable length pre-announce tone to selected speaker circuits. The ACM-1 also supervises the microphone, its cable and the keyswitch.

The ACM-1 acts as the controller for all VSM-1 switch modules, VFM-1 fan control modules and VLM-1 annunciator modules. It also controls the warden's page functions as routed from the TMM-1 telephone master module to the paging audio channel. It includes a Sonalert® for audible keystroke feedback and firefighter's call-in signal. The ACM-1 mounts on the rear of the MKB-2 display/keyboard module in the voice command console and occupies one MXL network address. The address is set using a DIP switch on the unit itself. One ACM-1 is required in each system.

This equipment is approved for operation over the temperature range of 0°C to 49°C.

Engineer and Architect Specifications

The Emergency Voice Alarm/Communication system shall include an ACM-1 module which shall act as the audio system master controller. It shall control all audio related functions.

The ACM-1 shall include a local audible and on-board amber LED for indication of ACM troubles. These troubles shall also be indicated on the MKB-2 display. An on-board amber LED shall also be supplied for monitoring the fire alarm system CPU network polling.

The ACM-1 shall include a microprocessor controlled signal generator with a complete set of available tones, selectable using system programming software. The tones shall be fully supervised and a connector shall be provided for the addition of a BTC-1 backup tone generator. Tones available shall be:

- Slow Whoop
- 900 Hz
- 900 Hz @ 120 PPM
- 900 Hz @ 30 PPM
- Chime
- 4-4-4
- California Code
- Yeow
- Yelp
- Wail
- Hi/Lo
- 2 KHz
- Temporal Code 3
- System Coded Audibles

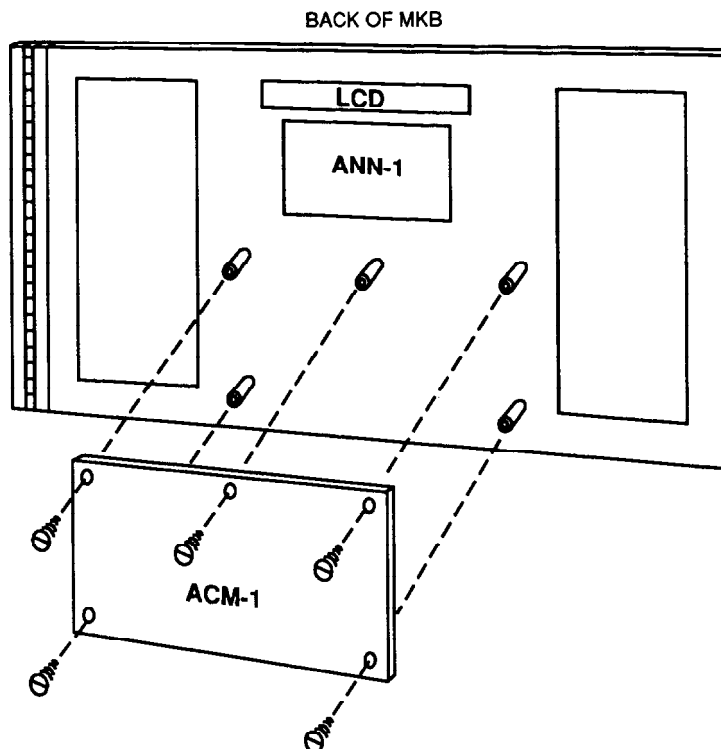
The ACM-1 shall also include a microphone pre-amplifier for use with the MMM-1 microphone master module. The preamplifier shall use an automatic gain control circuit to assure distortion free live voice announcements. A backup pre-amplifier shall be supplied with automatic transfer during primary pre-amp failure. When the microphone key switch is pressed, the ACM-1 shall be capable of sending an adjustable length pre-announce tone to selected speaker circuits. The ACM-1 shall supervise the microphone, its cable and the keyswitch.

The ACM-1 shall act as the controller for all VSM-1 switch modules, VFM-1 fan control modules and VLM-1 annunciator modules. It shall also control the warden s page functions as routed from the TMM-1 telephone master module to the paging audio channel. It shall include a Sonalert® for audible feedback of keystrokes and firefighter s telephone call-in. It shall mount on the rear of the MKB-2 display/keyboard module and occupy one MXL network address. The address shall be set using a DIP switch on the unit itself. One ACM-1 shall be required in each system.

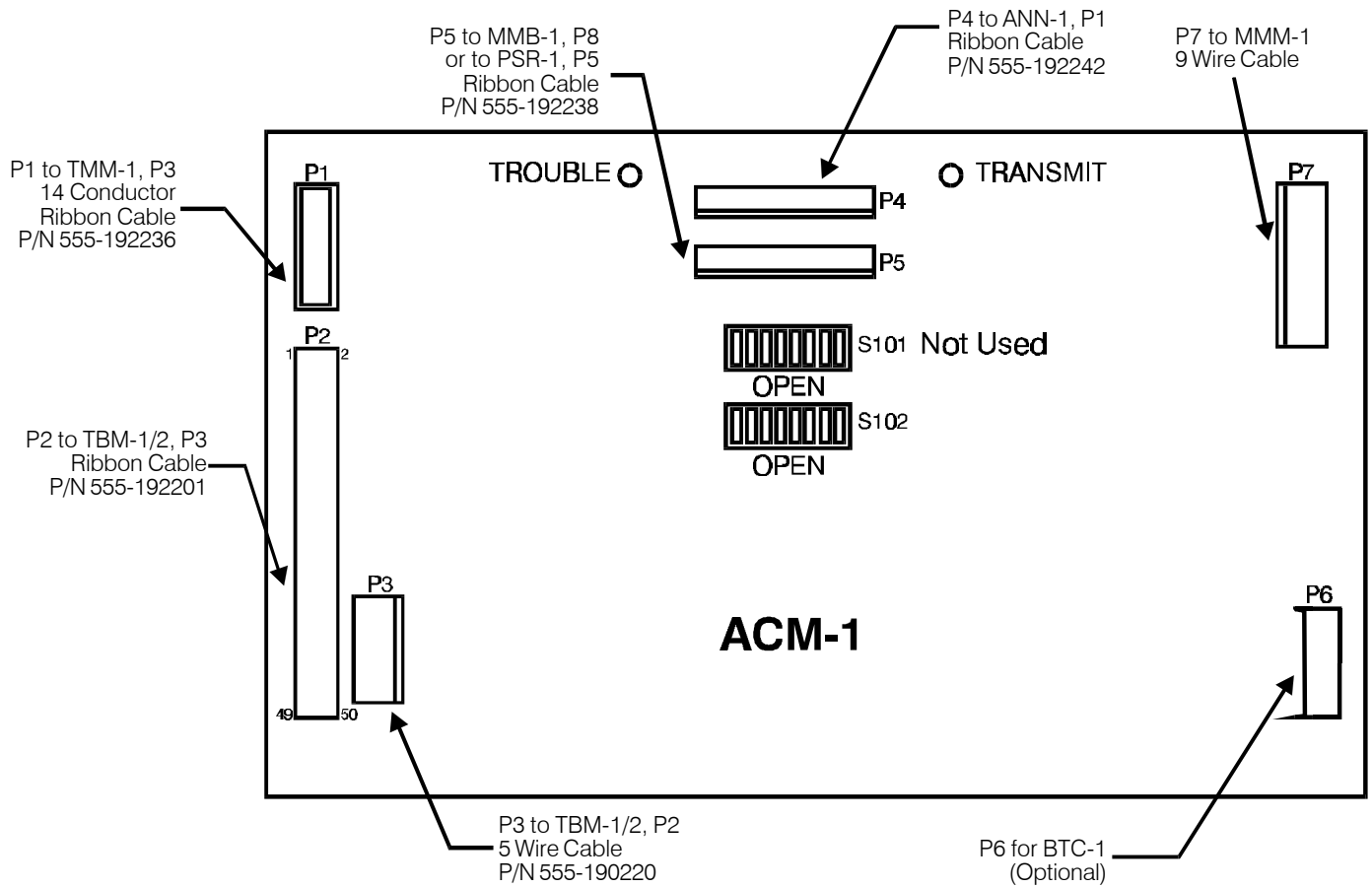
Ordering Information

Model	Description	Part Number
ACM-1	Audio Control Module	500-892082
	Installation Instructions	315-092083

Mounting Diagram



Connection Diagram



Wiring the ACM-1

NOTICE: The use of other than Cerberus Pyrotronics detectors and bases with Cerberus Pyrotronics equipment will be considered a misapplication of Cerberus Pyrotronics equipment and as such voids all warranties either expressed or implied in regard to loss, damage, liabilities and/or service problems.



Cerberus Pyrotronics
8 Ridgedale Avenue
Cedar Knolls, NJ 07927
Tel: (201) 267-1300
FAX: (201) 397-7008
Website: www.cerbpyro.com

4/97
5M
CPY-IG
Printed in U.S.A.

Cerberus Pyrotronics
50 East Pearce Street
Richmond Hill, Ontario
L4B, 1B7 CN
Tel: (905) 764-8384
FAX: (905) 731-9182

April 1997
Supersedes sheet dated 12/96