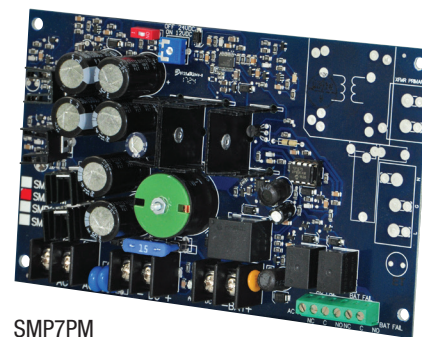


SMP7PM

Supervised Power Supply/Charger

Altronix SMP7PM supervised power supply/charger converts a low voltage AC input into a 12VDC or 24VDC output. This unit has a wide range of applications for access control, security and CCTV system accessories that require additional power.



SMP7PM

Specifications

Input

Voltage 28VAC

Outputs

Voltage 12VDC or 24VDC selectable
 Current 6A continuous max.
 Other Short circuit and thermal overload protection
 Filtered and regulated

Back-up Battery *(not included)*

Type Sealed lead acid or gel type
 Failover Upon AC loss, instantaneous

Supervision

AC Failure Form "C" contacts
 Battery Low/Fail Form "C" contacts

Indicators (LED)

Input Input voltage is present
 DC Output Powered

Physical and Environmental

Dimensions (L x W x H)
 7" x 4.25" x 1.25" (177.8mm x 108mm x 31.8mm)
 Product Weight 0.55 lb. (0.25 kg)
 Shipping Weight 0.7 lb. (0.32 kg)
 Temperature
 Operating 0°C to 49°C (32°F to 120°F)
 Storage -20°C to 70°C (-4°F to 158°F)
 Relative Humidity 85% +/-5%
 BTU/Hr (approx.):
 12VDC: 37 BTU/Hr.
 24VDC: 75 BTU/Hr.

Mounting hardware included

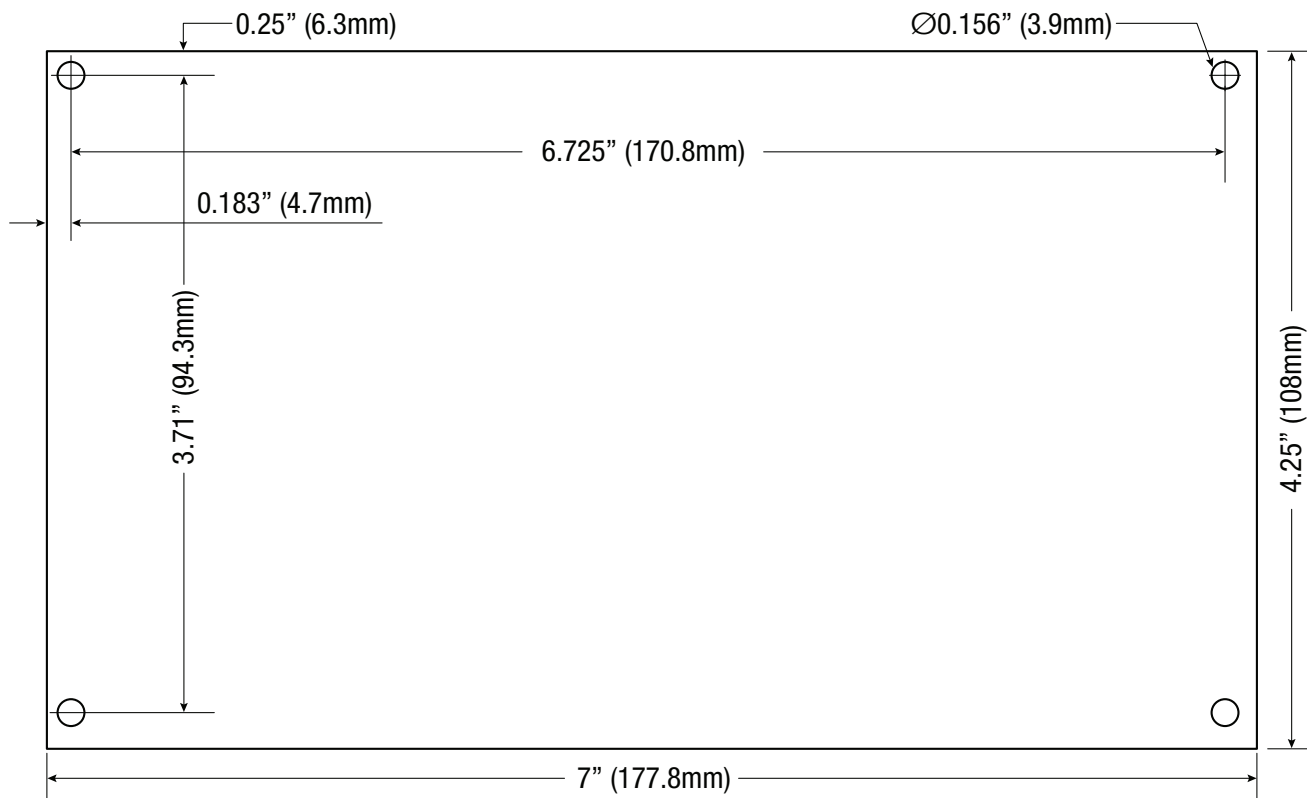
Lifetime Warranty

SMP7PM

Supervised Power Supply/Charger

Board Dimensions (L x W x H) and Drawing

7" x 4.25" x 1.25" (177.8mm x 108mm x 31.8mm)



Lifetime Warranty