

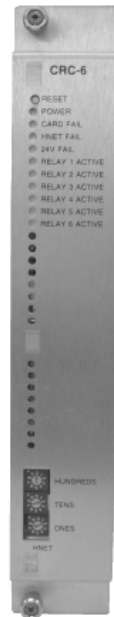


FireFinder XLS

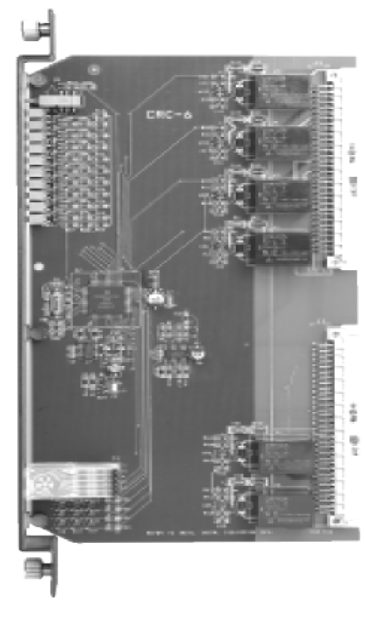
Controllable Relay Card Model CRC-6

ARCHITECT AND ENGINEER SPECIFICATIONS

- Six Independent SPDT Contacts (Form "C")
- 4 Amps @ 30 VDC / 120VAC Resistive
- 3.5 Amps @ 120 VAC Inductive (0.6 P.F.)
- Fully programmable
- Time-based operation
- Manual or automatic control
- Supervised coils
- Built-in status and troubleshooting LEDs
- On-board microprocessor
-  UL 864 9th Edition Listed &  ULC Listed; FM, CSFM, & NYMEA Approved



CRC-6 Front View



CRC-6 Side View

Product Overview

The Controllable Relay Card (Model CRC-6) is used with the FireFinder XLS Fire-Alarm Control Panel, and is designed to provide auxiliary control of building functions: door-holder release; elevator capture; smoke control, lock release, etc. Model CRC-6 plugs into one (1) slot in the Model CC-5 or Model CC-2 Card Cage, and provides six (6), fully programmable relays.

Each relay contains one set of SPDT contacts rated at 4 Amps 30 VDC / 120 VAC resistive and 3.5 amps 120 VAC inductive (0.6 PF). All relay coils are supervised to ensure proper operation. Individual relays can be automatically activated or deactivated through control by event and time-based logic contained in the Person Machine Interface (Model PMI).

Each relay may also be either manually controlled or 'Disarmed.'

Model PMI will indicate the affected relay, and the 'Partial System Disable' indicator will illuminate until the relay is returned to an 'Armed' condition. Model CRC-6 has on-board LEDs for system status and troubleshooting.

Indication of power, communication, internal operation, and 24V power source are provided, as well as indication of each relay's operation and status.

Programming for Model CRC-6 is performed using the FireFinder XLS software configuration tool, ZEUS.

Electrical Ratings

24V Back Plane Current	10mA + 20.5mA per Active Relay
Screw Terminal 24V Current	0
6.2V Back Plane Current	120mA
24V Standby Current	51mA + 20.5mA per Active Relay

Relays	4A 30VDC, 120VAC resistive 3.5A 120VAC (0.6PF)
--------	---

Details for Ordering

Model Number	Part Number	Description
CRC-6	500-033250	Controllable Relay Card

Temperature and Humidity Range

Products are [®]UL 864 9th Edition listed for indoor dry locations within a temperature range of 120+/-3°F (49+/-2°C) to 32+/-3°F (0+/-2°C) and at a relative humidity of 93+/-2% at a temperature of 90+/-3°F (32+/-2°C).

Controls and Indicators

<u>RESET switch</u>	Re-initializes the CRC-6 card only.
<u>POWER LED</u>	Indicates system power is applied to the CRC-6.
<u>CARD FAIL LED</u>	Illuminates when the card microprocessor has failed.
<u>HNET FAIL LED</u>	Illuminates when the HNET communication fails and the CRC-6 is in the DEGRADE mode.
<u>24V FAIL LED</u>	Illuminates when the 24 VDC supply falls below 18 VDC.
<u>RELAY ACTIVE LEDs</u>	Illuminates steadily to indicate the relay is active, and blinks to indicate relay coil failure. There is one LED for each of the six relays.

Notice: This marketing catalog sheet is not intended to be used for system design or installation purposes. For the most up-to-date information, refer to each product's installation instructions.