

This heavy duty version of the Infinity Back Box can mount any single gang module in an outdoor environment to remain dry and functional.

### SPECIFICATIONS

Available in 1 gang size. Pre-drilled and tapped hole configurations to mount single Infinity module.

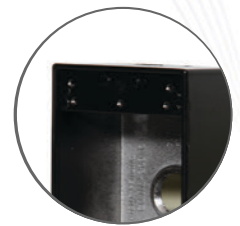
### COLORS



Red



White



Black



### FEATURES

- 2.75" x 4.5" x 2"
- 0.094" thick die cast aluminum
- Durable red, white, or black finish
- Ground screw, close-up plugs, and weatherproof gasket included
- 0.5" rigid conduit connections located on top, bottom, and back of box



### ORDERING INFORMATION

Part #	Description
IGB1RW	1 Gang Weatherproof Back Box (Red)
IGB1WW	1 Gang Weatherproof Back Box (White)
IGB1BW	1 Gang Weatherproof Back Box (Black)