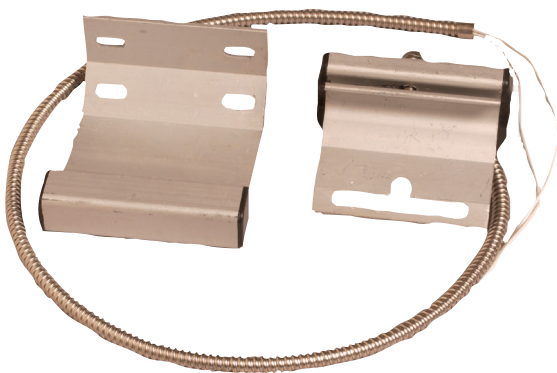


# ISN-C66 Track Mounted Overhead Door Contact

www.boschsecurity.com



**BOSCH**  
Invented for life



- ▶ Closed loop
- ▶ Mounts on door tracks
- ▶ Sturdy and solid
- ▶ Four-way magnet bracket
- ▶ Installs better and faster than standard overhead contacts

The contact is available in a metal finish. It has a wider gap for reduced false alarms and a four-way adjustable magnet bracket. It includes an armored cable. Use for mounting on door tracks.

## Certifications and approvals

UL and

| Region | Certification  |
|--------|--|
| Europe | CE 73/23/EEC and 93/68/EEC, EN50131: 1997, EN50131-6: 1997, EN60950: 2000, EN60335-1: 1994 +A1: 1996 Annex B |

## Installation/configuration notes

### Compatibility Information

All contact models are compatible with control panel models that accept contact inputs.

## Parts included

| Quantity Per Package | Component                      |
|----------------------|--------------------------------|
| 1                    | Assembly (contact and bracket) |
| 1                    | Magnet                         |

## Technical specifications

|  |   |
|--|---|
| Gap Width:                               | 44.45 mm (1.75 in.)                                       |
| Contact Assembly and Bracket Dimensions: | 76.2 mm x 66 mm x 45.8 mm (3.07 in x 2.60 in. x 1.80 in.) |
| Cable Length:                            | 46 cm (18 in.)  |
| Switch Configuration Type:               | Single pole single throw (SPST)                           |
| Maximum Contact Resistance:              | 150 $\mu\Omega$ (micro-ohm)                               |
| Minimum Breakdown Voltage:               | 250 VDC   |
| Insulation Resistance:                   | $10^{10} \Omega$  |
| Electrostatic Cap:                       | 0.3 PF  |
| Contact Capacity:                        | 10 VAC  |
| Maximum Conductive Current:              | 1.0 A   |
| Maximum Voltage:                         | 100 V   |
| Operating Temperature Range:             | -40° C to 60° C (-40°F to -140°F)                         |

## Package Information

**ATTENTION!** Each package contains one assembly with contact, bracket, and one magnet.

## Ordering information

### ISN-C66 Track Mounted Overhead Door Contact

Package contains one assembly with contact, bracket, and one magnet.

Order number **ISN-C66**

---

#### Represented by:

##### Americas:

Bosch Security Systems, Inc.  
130 Perinton Parkway  
Fairport, New York, 14450, USA  
Phone: +1 800 289 0096  
Fax: +1 585 223 9180  
security.sales@us.bosch.com  
www.boschsecurity.us

##### Europe, Middle East, Africa:

Bosch Security Systems B.V.  
P.O. Box 80002  
5617 BA Eindhoven, The Netherlands  
Phone: + 31 40 2577 284  
Fax: +31 40 2577 330  
emea.securitysystems@bosch.com  
www.boschsecurity.com

##### Asia-Pacific:

Robert Bosch (SEA) Pte Ltd, Security Systems  
11 Bishan Street 21  
Singapore 573943  
Phone: +65 6571 2808  
Fax: +65 6571 2699  
apr.securitysystems@bosch.com  
www.boschsecurity.asia

##### China:

Bosch (Shanghai) Security Systems Ltd.  
201 Building, No. 333 Fuquan Road  
North IBP  
Changning District, Shanghai  
200335 China  
Phone +86 21 22181111  
Fax: +86 21 22182398  
www.boschsecurity.com.cn

##### America Latina:

Robert Bosch Ltda Security Systems Division  
Via Anhanguera, Km 98  
CEP 13065-900  
Campinas, Sao Paulo, Brazil  
Phone: +55 19 2103 2860  
Fax: +55 19 2103 2862  
latam.boschsecurity@bosch.com  
www.boschsecurity.com