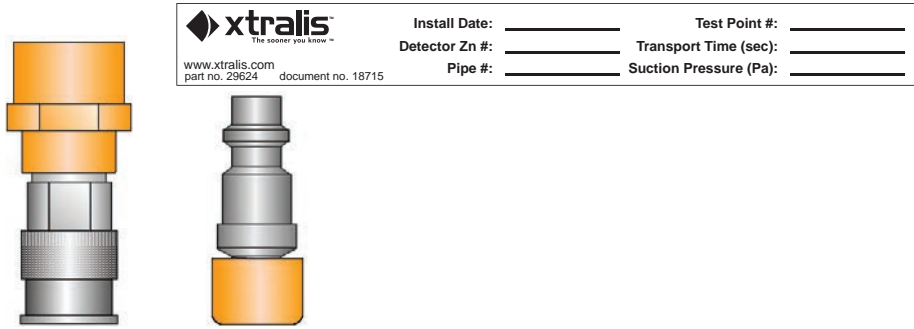


BENCHMARK TEST POINT

VSP-TP-KIT-US



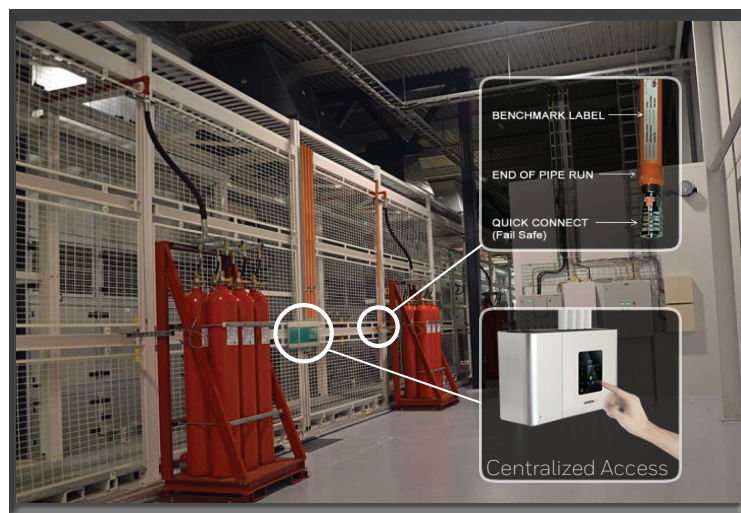
Product Description

As with any smoke detection system, to maintain Aspirating Smoke Detection (ASD) systems at their peak performance, routine test and inspection are required at a frequency dictated by local codes and standards, or more frequently as may be required by the specific application requirements.

Benchmark testing from a point along each pipe run furthest from the ASD detector provides a means to validate system and pipe network integrity. When properly designed and installed, benchmark test points are positioned at an accessible height and location, and provided with a means to open temporarily when testing.

The Xtralis Quick Connect Benchmark Test Point kit has been designed to simplify construction and enhance suitability providing robust, normally closed fail safe operation. An accompanying test point label provides commissioning technicians a method to record benchmark commissioning data using a permanent marker on a moisture resistant label. This label is placed just above the benchmark quick connect fitting on each pipe run thereby making the data readily accessible for future inspections.

While there are requirements in various codes, standards and end user practices for acceptable smoke transport time from the last sampling point, benchmark data needs to be established to qualify pipe network integrity and airflow through all other sampling points. The Benchmark Test Point should not be confused with the last sampling point on the pipe run. ASPIRE calculations must be available showing expected smoke transport time at the last sampling point and as well the test point transport time when opened. The benchmark is established by measuring the test point smoke transport time and the resulting value documented at the test point for subsequent testing.



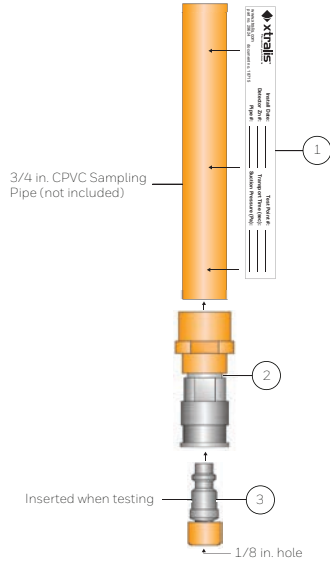
Features

- Convenient system performance verification from an accessible location
- Normally closed fail safe design
- Quick connect/disconnect
- Quality robust construction
- New and retrofit friendly
- Readily available commissioning data
- Standard 3/4" CPVC pipe interface

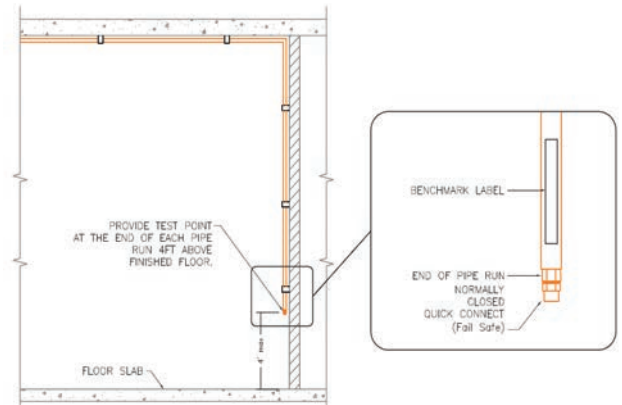
BENCHMARK TEST POINT TECHNICAL SPECIFICATIONS



Assembly - VSP-TP-KIT-US



Typical Installation Detail Drawing



Benchmark Test Point Specification Language

A Benchmark Test Point shall be provided at the furthest end of each pipe run, opposite end of the ASD apparatus. Provisions shall be made so that this test point can be located maximum 1.82m (6ft) above finished floor. The test point shall be constructed using a normally closed quick connect fitting. A mating plug insert having an orifice of nominal 3.2mm (1/8 inch) shall be temporarily fitted to facilitate benchmark performance verification when required. This test point is intended to benchmark system performance at time of initial commissioning and during routine test and inspection. The test point shall be labeled documenting benchmark system performance at time of commissioning using Manufacturer supplied labels intended for this purpose. Benchmark labels shall be placed just above the test points and be positioned so that they are visible without obstruction.

Kit Components

Item	Quantity	Part Description
1	1	Test Point Labels
2	1	CPVC Socket x 1/2 in MNPT Adapter fitted with Brass Quick Connect
3	1	Coupler Plug (inserted when testing)

Ordering Information

Ordering Code	Description
VSP-TP-KIT-US	Benchmark Test Point Kit (1 assembly, includes 1 Test Plug)

