

Kidde Fire Systems System Component Datasheet



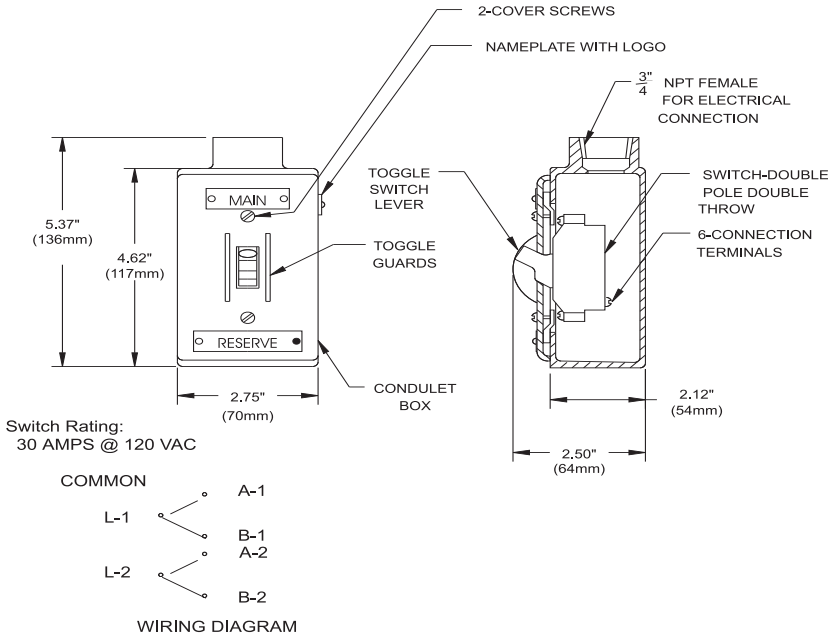
Electric Main-to-Reserve Transfer Switch

Effective: September 2019
K-85-8070 Rev BB

FEATURES

- For Approvals, see the “Compatibility” table.

P/N: 84-802398-000



MATERIALS

Conduit Box: Steel with Red Enamel Finish
Toggle Switch Lever: Bakelite

COMPATIBILITY

Series	DIOM P/N	Approvals
ECS-500™ System	06-237585-001	UL, FM
ECS-500™ Marine System	06-237589-001	UL, USCG
ECS™ 360 with 3M™ Novec™ 1230 Fire Protection Fluid	06-236553-001	UL, FM
ADS™ with 3M™ Novec™ 1230 Fire Protection Fluid	06-237256-001	UL, FM
ECS™ 360 Marine with 3M™ Novec™ 1230 Fire Protection Fluid	06-236559-001	UL, USCG
ADS™ Marine with 3M™ Novec™ 1230 Fire Protection Fluid	06-237257-001	UL, USCG
ECS™ 360 with HFC-227ea System	06-236115-001	UL, FM
ECS™ 360 Modular with HFC-227ea System	06-236116-001	UL, FM
ECS™ 360 Marine with HFC-227ea System	06-236225-001	UL, USCG
ADS™ Marine with HFC-227ea System	06-236595-001	UL, USCG
ADS™ with HFC-227ea System	06-236068-001	UL, FM
FE-13™ System	06-236169-002	UL
FE-13™ Modular System	06-236193-001	UL
High Pressure CO2 Marine System	220610	UL, USCG
High Pressure CO2 System	81-CO2MAN-001	UL, FM

EXPORT INFORMATION (USA)

Jurisdiction: EAR
Classification: EAR99

This document contains technical data subject to the EAR.

All trademarks are property of their respective owners.
3M and Novec are trademarks of 3M Company.

This literature is provided for informational purposes only. KIDDE-FENWAL, INC. believes this data to be accurate, but it is published and presented without any guarantee or warranty whatsoever. KIDDE-FENWAL, INC. assumes no responsibility for the product's suitability for a particular application. Product features specified are only applicable when the fire suppression system is correctly designed, installed, maintained and serviced by trained, authorized Kidde Fire Systems distributors as per the applicable design, installation, operation, and maintenance manuals. If you need more information on this product, or if you have a particular problem or question, contact: KIDDE-FENWAL, INC., Ashland, MA 01721 USA, Telephone: (508) 881-2000.