



## TECHNICAL BULLETIN

## VIKING MODEL VXD PRETRIMMED RISERS (PTR)

The Viking Corporation, 210 N Industrial Park Drive, Hastings MI 49058

Telephone: 269-945-9501 Technical Services: 877-384-5464 Fax: 269-818-1680 Email: techsvcs@vikingcorp.com

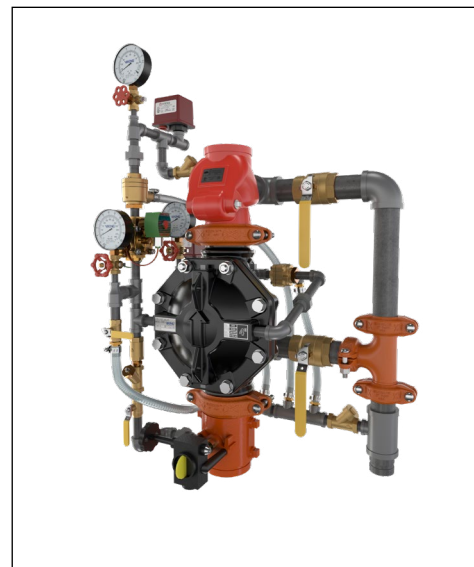
Visit the Viking website for the latest edition of this technical data page [www.vikinggroupinc.com](http://www.vikinggroupinc.com)

### 1. DESCRIPTION

The Viking Model VXD Preaction Systems\* are now available as Pre-Trimmed Riser (PTR) systems. The PTR systems are pre-assembled and ready to install. These systems include the following common components needed for preaction systems (if applicable):

- Riser check valve
- Pneumatic actuator
- Release solenoid
- Water flow switch
- Air supervisory switch
- Gauges and valves
- Water supply control valve
- Fully assembled trim with drain manifolds and hoses

\*Limited availability of sizes and system types; see below.



### 2. LISTINGS AND APPROVALS



cULus Listed - Categories VLFT and VLFT7



FM Approved

### 3. AVAILABLE SIZES AND CONFIGURATIONS

The following system types and sizes are available (limited) for purchase. Please contact Viking for pricing and availability.

**TABLE 1: ORDERING INFORMATION**

Nominal Size	System Type			
	Deluge with Electric Release	Single Interlock Preaction with Electric Release	Double Interlock with Electric/Pneumatic Release	Double Interlock with Electric/Pneu-Lectric Release
1½	<b>1½" and 2" COMING SOON!</b>			
2	<b>1½" and 2" COMING SOON!</b>			
2½"	25464	25466	25468	25466
3"	25396	25398	25400	25398
4"	25411	25413	25415	25413
6"	25437	25439	25441	25439
8"	25497	25499	25501	25499

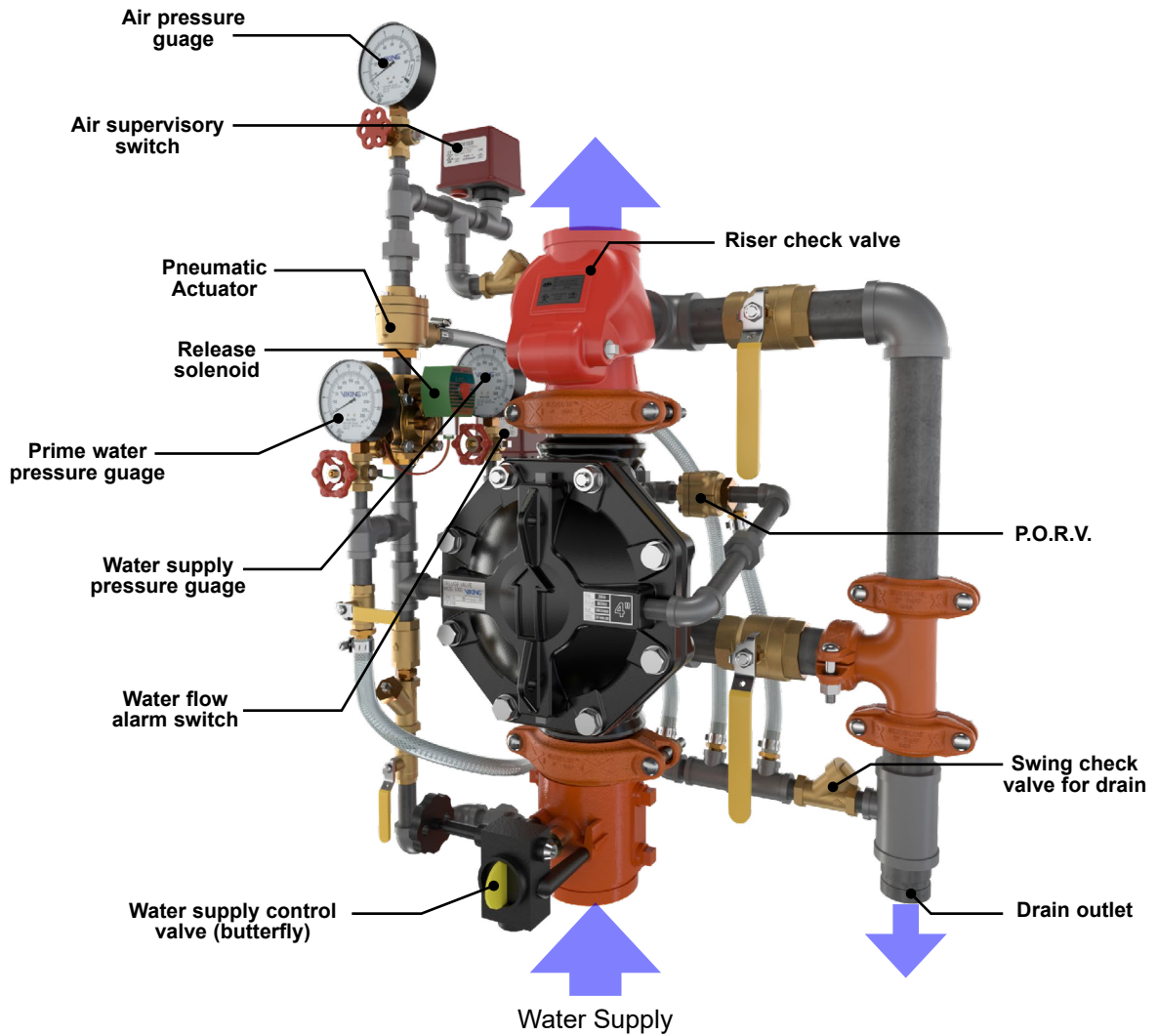


# TECHNICAL BULLETIN

## VIKING MODEL VXD PRETRIMMED RISERS (PTR)

The Viking Corporation, 210 N Industrial Park Drive, Hastings MI 49058  
Telephone: 269-945-9501 Technical Services: 877-384-5464 Fax: 269-818-1680 Email: techsvcs@vikingcorp.com  
Visit the Viking website for the latest edition of this technical data page [www.vikinggroupinc.com](http://www.vikinggroupinc.com)

### 4. COMPONENT IDENTIFICATION



**Figure 1: System Components**  
**4" Double Interlock Preaction System with**  
**Electric Pneumatic Release Shown**

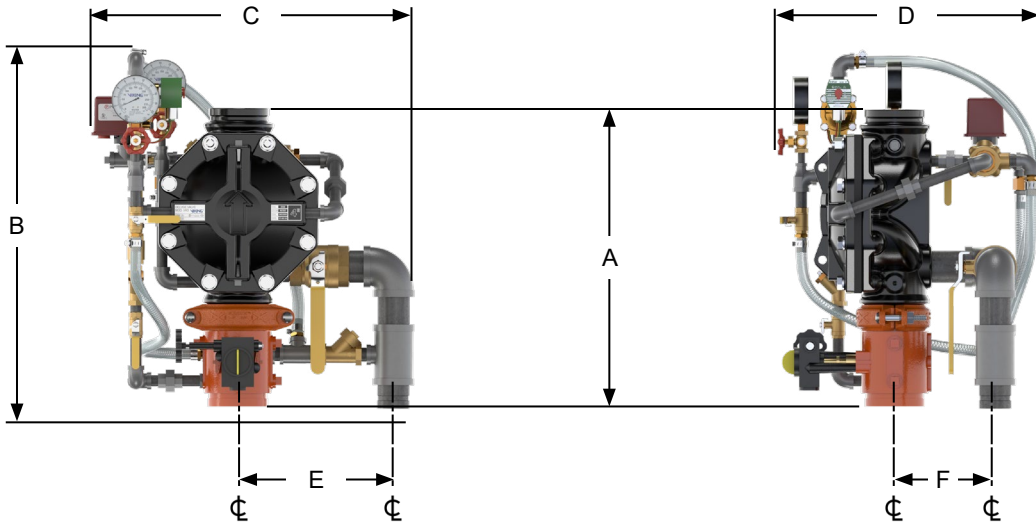


**TECHNICAL BULLETIN**

**VIKING MODEL VXD  
PRETRIMMED RISERS (PTR)**

The Viking Corporation, 210 N Industrial Park Drive, Hastings MI 49058  
 Telephone: 269-945-9501 Technical Services: 877-384-5464 Fax: 269-818-1680 Email: techsvcs@vikingcorp.com  
 Visit the Viking website for the latest edition of this technical data page www.vikinggroupinc.com

**5. DIMENSIONS**



**Figure 2: Dimensions**  
**4" Deluge System with Electric Release Shown**  
*Not to scale. All dimensions are approximate.*

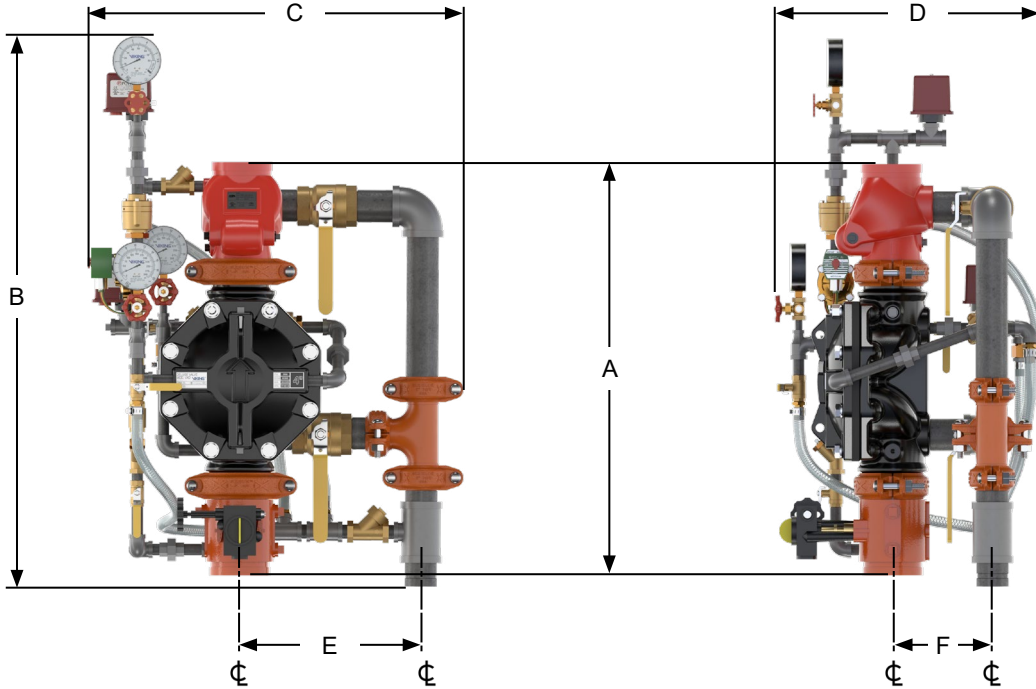
TABLE 2: DIMENSIONS FOR DELUGE SYSTEM WITH ELECTRIC RELEASE							
System Type	Nominal Size	A (Takeout)	B	C	D	E	F
Deluge with Electric Release	2½"	14"	22¼"	20¼"	19¼"	8⅝"	5¾"
	3"	19⅞"	23½"	21¼"	20½"	8⅝"	6"
	4"	22⅞"	26⅞"	24½"	19⅞"	11⅝"	7½"
	6"	25¼"	29⅝"	21⅞"	21⅞"	11⅞"	7½"
	8"	30¼"	33⅞"	27⅞"	24½"	8¾"	11"



**TECHNICAL BULLETIN**

**VIKING MODEL VXD  
PRETRIMMED RISERS (PTR)**

The Viking Corporation, 210 N Industrial Park Drive, Hastings MI 49058  
 Telephone: 269-945-9501 Technical Services: 877-384-5464 Fax: 269-818-1680 Email: techsvcs@vikingcorp.com  
 Visit the Viking website for the latest edition of this technical data page www.vikinggroupinc.com



**Figure 3: Dimensions**

**4" Double Interlock Preaction System with Electric Pneumatic Release Shown**

*Not to scale. All dimensions are approximate.*

<b>TABLE 3: DIMENSIONS FOR PREACTION SYSTEMS</b>							
<b>System Type</b>	<b>Nominal Size</b>	<b>A (Takeout)</b>	<b>B</b>	<b>C</b>	<b>D</b>	<b>E</b>	<b>F</b>
Single Interlock with Electric Release	2½"	25⅝"	28⅝"	24⅝"	19¼"	10⅞"	5¾"
	3"	26⅞"	30¼"	23⅜"	20½"	10⅞"	6⅞"
	4"	30⅜"	34⅝"	28⅝"	20⅞"	13⅞"	7½"
	6"	38"	41¼"	29¼"	21⅞"	12⅝"	7½"
	8"	45"	48"	22¼"	22½"	14⅞"	8⅝"
Double Interlock with Electric/ Pneumatic Release	2½"	25¼"	30⅝"	23¾"	19¼"	10⅞"	5¾"
	3"	26⅞"	32⅞"	23⅜"	20½"	10⅞"	6⅞"
	4"	30⅜"	40½"	27¼"	20"	13¾"	7⅞"
	6"	38"	43⅝"	27¾"	21⅞"	12⅝"	7⅝"
	8"	45"	47⅞"	30"	24½"	13"	8⅝"
Double Interlock with Electric/ Pneu-Lectric Release	2½"	25⅝"	28⅝"	24⅝"	19¼"	10⅞"	5¾"
	3"	26⅞"	30¼"	23⅜"	20½"	10⅞"	6⅞"
	4"	30⅜"	34⅝"	28⅝"	20⅞"	13⅞"	7½"
	6"	38"	41¼"	29¼"	21⅞"	12⅝"	7½"
	8"	45"	48"	22¼"	22½"	14⅞"	8⅝"