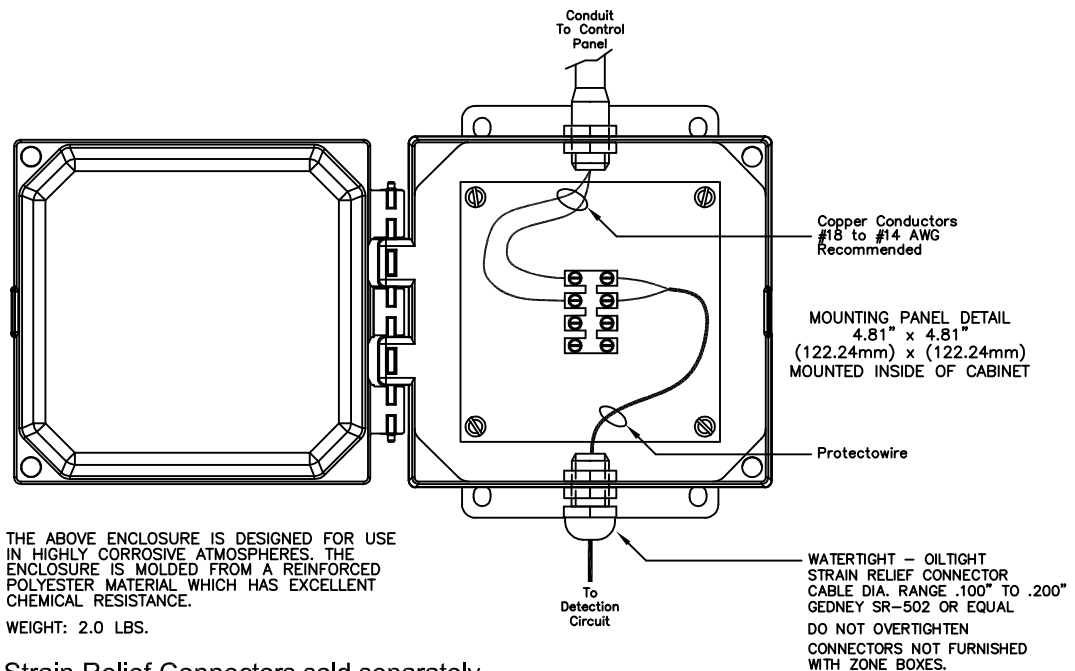
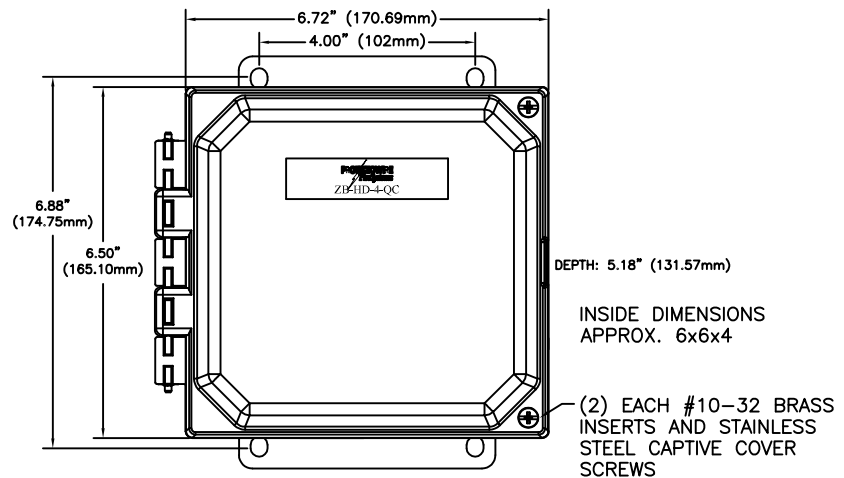


ZB-HD-4-QC  
 HEAVY DUTY ZONE BOX WITH  
 QUICK CONNECT TERMINALS  
 TWO WIRE CLASS B DETECTION CIRCUIT  
 DATA SHEET 8944A  
 2-10-2015

The illustration below depicts a typical wiring dressing of a Heavy Duty Zone Box in a Class B detection circuit of a fire alarm system using Protectowire as the detector. This zone box is furnished with quick connect terminals which makes it possible to fasten the detector directly to the terminals. All bends in the Protectowire should have a radius of at least 2-1/2". For further information on detector splicing see diagram provided with splicing sleeves and in installation guide for Protectowire.



THE ABOVE ENCLOSURE IS DESIGNED FOR USE IN HIGHLY CORROSIVE ATMOSPHERES. THE ENCLOSURE IS MOLDED FROM A REINFORCED POLYESTER MATERIAL WHICH HAS EXCELLENT CHEMICAL RESISTANCE.  
 WEIGHT: 2.0 LBS.

SR-502 Series Strain Relief Connectors sold separately

INSTALL IN ACCESSIBLE LOCATION PREFERABLY NOT MORE THAN SIX FEET ABOVE THE FLOOR.