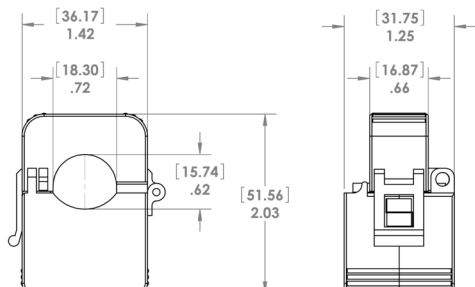


## CURRENT TRANSFORMER

### CTA1 SERIES

Enclosed Self-Powered Split Core 25, 50, and 100 Amp Current Transformers with 333 mV Output



### SPECIFICATIONS

**Environment:** Indoor Use Only  
5 to 176° F (-15 to 80°C)  
90% relative humidity  
**Wires:** 6', 18 AWG, 600V Rated  
**Primary Input:** 100A max. AC 50/60 Hz  
**Secondary Output:** 0.333 Vac  
**Accuracy:** 0.5% (typical)  
**Linearity:** 10%-120%  
**Polarity:** White-Hi, Black-Low  
**Frequency Range:** 40-400 Hz  
**Max Sense Voltage:** 600 Vac  
**Approvals:** ETL Listed, CE, RoHS

### CTA1 SERIES SELECTION GUIDE

Model #	Primary Input (A)	Secondary Output (V)	Ratio	Accuracy (%)
CT-025A1-333	25	0.333	25A/0.333V	0.8
CT-050A1-333	50	0.333	50A/0.333V	0.5
CT-100A1-333	100	0.333	100A/0.333V	0.5