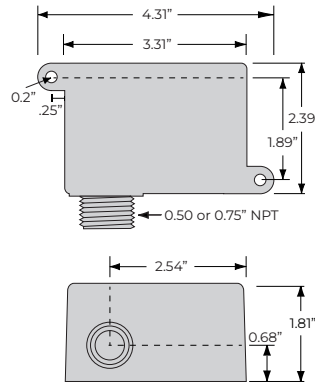
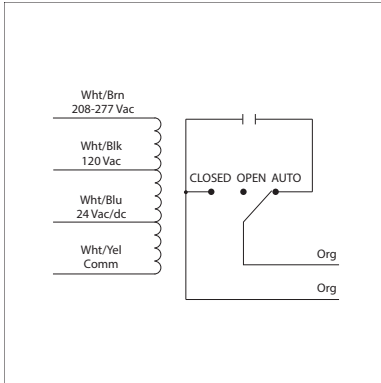


## 20 AMP POWER CONTROL RELAY

### RIB2421SB

Power Relay, 20 Amp SPST-N/O + Override, 24 Vac/dc/208-277 Vac/120 Vac Coil, NEMA 1 Housing



## SPECIFICATIONS

**# Relays & Contact Type:** One (1) SPST Continuous Duty Coil  
**Expected Relay Life:** 10 million cycles minimum mechanical  
**Operating Temperature:** -30 to 140° F  
**Humidity Range:** 5 to 95% (noncondensing)  
**Operate Time:** 18ms  
**Relay Status:** LED On = Activated  
**Dimensions:** 2.30" x 3.20" x 1.80" with .50" NPT hub  
**Origin:** Made of US and non-US parts  
**Wires:** 16", 600V Rated  
**Approvals:** UL Listed, UL916, C-UL, RoHS  
**Housing Rating:** UL Accepted for Use in Plenum, NEMA 1  
**Gold Flash:** No  
**Override Switch:** Yes

**Coil Current:**  
83 mA @ 24 Vac  
47 mA @ 120 Vac  
69 mA @ 208-277 Vac  
47 mA @ 30 Vdc

**Note:**  
Order Normally Closed by adding "-NC" to end of model number

**Contact Ratings:**  
20 Amp Resistive @ 277 Vac  
5 Amp Resistive @ 480 Vac  
20 Amp Ballast @ 277 Vac  
*Not rated for Electronic Ballast*  
10 Amp Tungsten @ 120 Vac (N/O)  
770 VA Pilot Duty @ 120 Vac  
1,110 VA Pilot Duty @ 277 Vac  
2 HP @ 277 Vac  
1 HP @ 120 Vac

**Coil Voltage Input:**  
24 Vac/dc ; 208-277 Vac ;  
120 Vac ; 50-60 Hz  
Drop Out = 2.1 Vac / 3.8 Vdc  
Pull In = 18 Vac / 22 Vdc