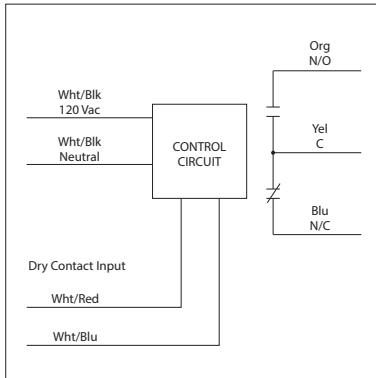


## DRY CONTACT INPUT TIME DELAY RELAYS

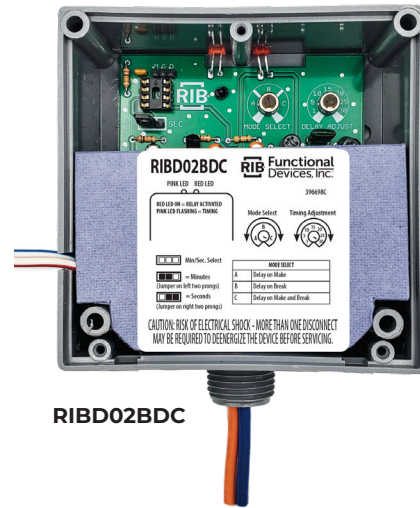
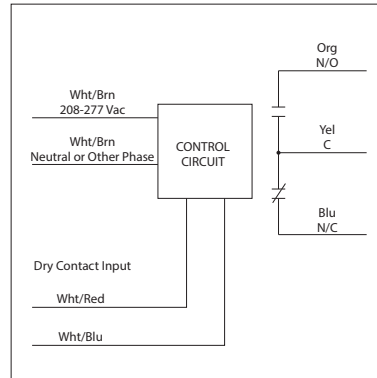
### RIBD01BDC

Time Delay Dry Contact Relay, 20 Amp SPDT, Class 2 Dry Contact Input, 120 Vac Power Input, NEMA 1 Housing



### RIBD02BDC

Time Delay Dry Contact Relay, 20 Amp SPDT, Class 2 Dry Contact Input, 208-277 Vac Power Input, NEMA 1 Housing



## SPECIFICATIONS

- # Relays & Contact Type: One (1) SPDT Continuous Duty Coil
- Expected Relay Life: 10 million cycles minimum mechanical
- Operating Temperature: -30 to 140° F
- Humidity Range: 5 to 95% (noncondensing)
- Operate Time: 18ms after time delay
- Relay Status: Red LED On = Activated
- Time Delay Status: Pink LED FLASHING = Timing
- Timing Mode: Selectable: Delay On Make, Delay On Break, or Delay On Make and Break
- Timing Range: 1-30 Seconds or 1-30 Minutes
- Timing Adjustment: 3 pin header w/jumper for sec/min and single turn potentiometer for timing adjustment within range
- Dimensions: 4.00"H x 4.00"W x 1.81"D with 0.50" NPT hub
- Origin: Made of US and non-US parts
- Wires: 16", 600V Rated
- Approvals: UL Listed, UL916, C-UL, CE, RoHS
- Housing Rating: UL Accepted for Use in Plenum, NEMA 1
- Gold Flash: No
- Override Switch: No

### Notes:

#### Dry Contact Input Operation:

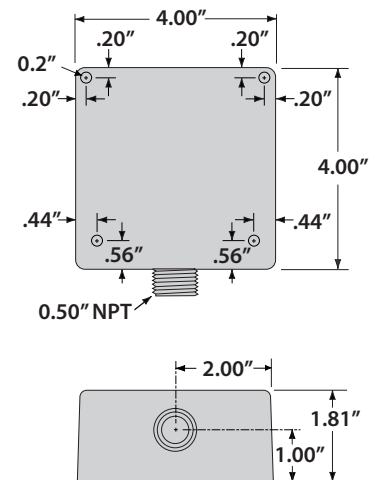
Mode A&C: Close White/Red wire to White/Blue wire to start timing. Relay will activate after timing sequence has ended.

Mode B&C: Open White/Red and White/Blue wires to start timing. Relay will deenergize after timing sequence has ended.

If more than one dry contact RIB® shares a single dry contact input, White/Blue must be common.

Changing min/sec or mode while unit is running will reset the unit (de-energize the relay and turn off the timer). Once the dry-contact input is opened the unit will function as normal again.

If the unit is powered up with the dry-contact input closed, the unit will begin timing (MODE A and MODE C) or energize the relay (MODE B).



### Contact Ratings:

- 20 Amp Resistive @ 277 Vac
- 20 Amp Ballast @ 277 Vac
- 16 Amp Electronic Ballast @ 277 Vac (N/O)
- 10 Amp Tungsten @ 120 Vac (N/O)
- 770 VA Pilot Duty @ 120 Vac
- 1,110 VA Pilot Duty @ 277 Vac
- 2 HP @ 277 Vac
- 1 HP @ 120 Vac

### Power Input:

- 66 mA @ 120 Vac (RIBD01BDC)
- 62 mA @ 208-277 Vac (RIBD02BDC)

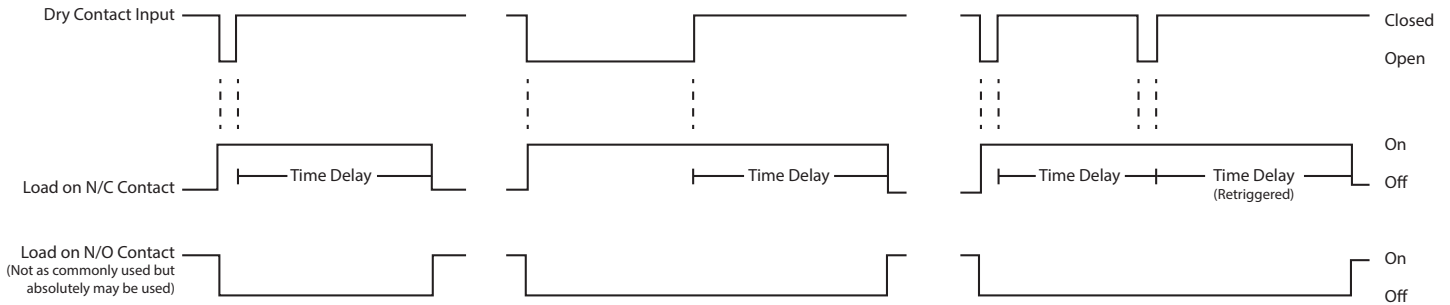
### WIRING FOR LOAD ON N/C CONTACT



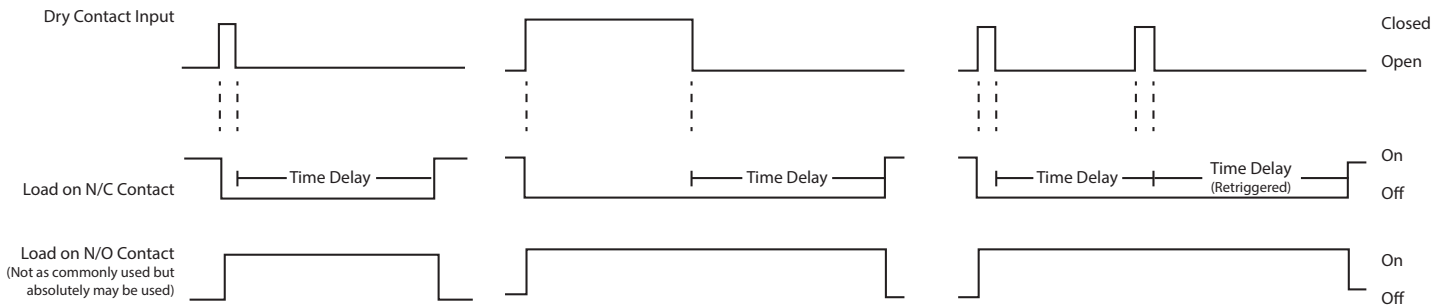
### WIRING FOR LOAD ON N/O CONTACT



## MODE A: DELAY ON MAKE



## MODE B: DELAY ON BREAK



## MODE C: DELAY ON MAKE AND DELAY ON BREAK

