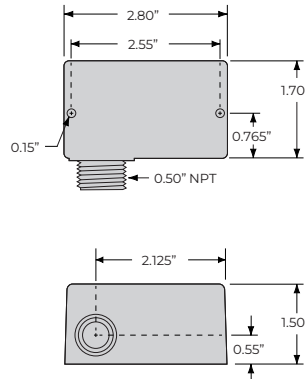
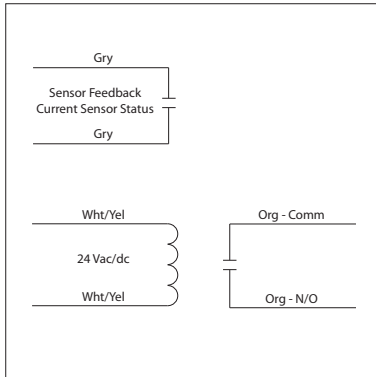


RELAY & AC CURRENT SWITCH COMBO

RIBHX24BA

Enclosed Relay 20Amp SPST 24Vac/dc Internal Adjustable AC Sensor



SPECIFICATIONS

Expected Relay Life: 10 million cycles minimum mechanical
Operating Temperature: -30 to 140° F
Humidity Range: 5 to 95% (noncondensing)
Operate Time: 20ms
Relay Status: Red or Green LED On = Activated
Current Sensor Status: Green LED On = Current Over Trip Point Adjustable
Dimensions: 1.70" x 2.80" x 1.50" with .50" NPT hub
Wire Length: 16", 600V Rated
Approvals: UL Listed, UL916, C-UL, CE, RoHS
Housing Rating: UL Accepted for Use in Plenum, NEMA 4
Gold Flash: No
Sensor Type: Internal, with contact status
Sensor Threshold: Adjustable
Sensor Range: .25-20 Amps
Sensor Feedback Output: Solid State Contact 30 Vac/dc, 100 mA
Hysteresis: Solid

Contact Ratings:
 20 Amp Resistive @ 277 Vac
 20 Amp Ballast @ 277 Vac
 16 Amp Electronic Ballast @ 277 Vac (N/O)
 10 Amp Tungsten @ 120 Vac (N/O)
 1,110 VA Pilot Duty @ 277 Vac
 770 VA Pilot Duty @ 120 Vac
 2 HP @ 277 Vac
 1 HP @ 120 Vac

Coil Current:
 128 mA @ 24 Vac
 71 mA @ 30 Vdc
Coil Voltage Input:
 24 Vac ; 50-60 Hz
 Drop Out = 3 Vac
 Pull In = 18 Vac

Note:
 Order RIBHX24BA-RD for red enclosure

Sensor Contact:
 • When current sensor status is off (open), leakage <30 uA @ 30Vac/dc
 • When current sensor status is on (closed), voltage drop <.3 Vac/dc @ .1 Amp