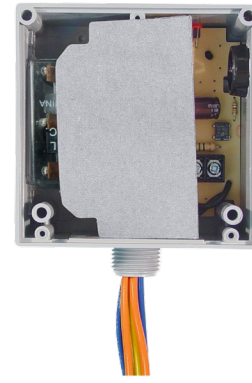
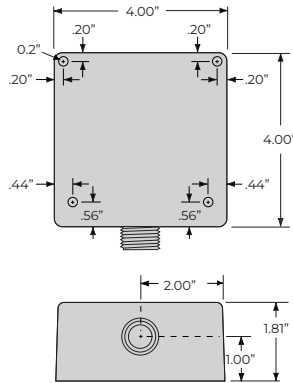
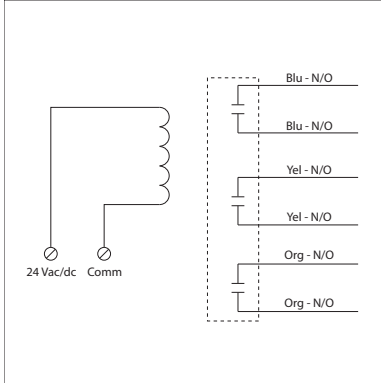


20 AMP POWER CONTROL RELAY

RIBT243P

Power Relay, 20 Amp 3PST-N/O, 24 Vac/dc Coil, Hi/Lo Voltage Separation, NEMA 1 Housing



SPECIFICATIONS

Relays & Contact Type: One (1) 3PST Continuous Duty Coil
Expected Relay Life: 10 million cycles minimum mechanical
Operating Temperature: -30 to 140° F
Humidity Range: 5 to 95% (noncondensing)
Operate Time: 20ms
Relay Status: LED On = Activated
Dimensions: 4.000"H x 4.000"W x 1.800"D with .50" NPT Hub
Origin: Made of US and non-US parts
Wires: 16", 600V Rated
Approvals: UL Listed, UL916, C-UL, CE, RoHS
Housing Rating: UL Accepted for Use in Plenum, NEMA 1
Gold Flash: No
Override Switch: No

Contact Ratings:
20 Amp Resistive @ 300 Vac, 28 Vdc
20 Amp Ballast @ 277-480 Vac
Not rated for Electronic Ballast
15 Amp Resistive @ 600 Vac
770 VA Pilot Duty @ 120 Vac, 1 Phase
1,158 VA Pilot Duty @ 240 Vac, 1 Phase
1,110 VA Pilot Duty @ 277 Vac, 1 Phase
1,640 VA Pilot Duty @ 480 Vac, 1 Phase
1,466 VA Pilot Duty @ 240 Vac, 3 Phase
2,112 VA Pilot Duty @ 480 Vac, 3 Phase
Heavy Pilot Duty @ 600 Vac
7.5 HP @ 480 Vac, 3 Phase
5 HP @ 240 Vac, 3 Phase
3 HP @ 480-600 Vac, 1 Phase
2 HP @ 240-277 Vac, 1 Phase
1 HP @ 120 Vac, 1 Phase

Coil Current:
210 mA @ 24 Vac
154 mA @ 30 Vdc

Coil Voltage Input:
24 Vac/dc ; 50-60 Hz
Drop Out = 3 Vac / 3.8 Vdc
Pull In = 20 Vac / 22 Vdc

Note:
Order Normally Closed by adding "-NC" to end of model number