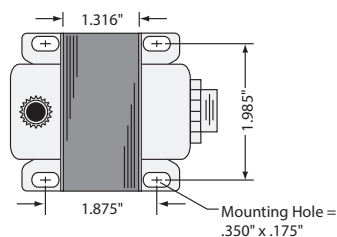


TRANSFORMER

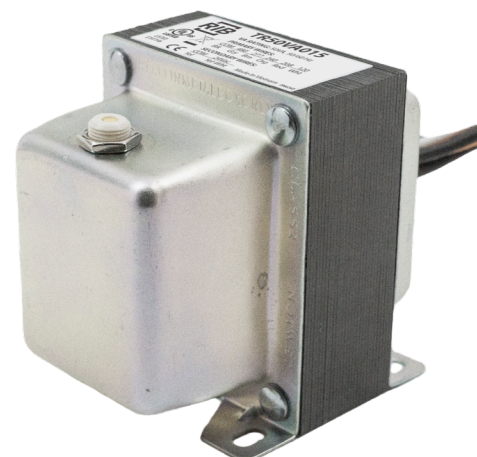
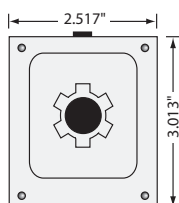
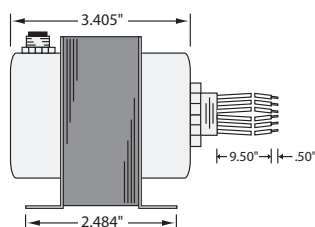
TR50VA015

Transformer 50 VA, 480/277/240/208/120 to 24 Vac, Circuit Breaker, Foot and Single Threaded Hub Mount



PRIMARY WIRES	SECONDARY WIRES
Gry - 480 Vac	Yel/Wht - 24 Vac
Brn - 277 Vac	
Org - 240 Vac	
Red - 208 Vac	
Wht - 120 Vac	
Blk - Comm	Yel - Comm

Secondary Yel/Wht wire in phase with Primary Blk wire.



SPECIFICATIONS

VA Rating: 50
Frequency: 50/60 Hz
Mounting: Foot & Single Threaded Hub
Over Current Protection: Circuit Breaker
Operating Temperature: -30 to 140° F

Dimensions: 3.405" x 2.517" x 3.013" (w/ .500" NPT Hub)
Wire Length: 9.5" Typical w/ .5" Strip
MTBF: 100,000 Hours @ 77° F
Construction: Split-Bobbin
Approvals: Class 2 UL5085-3 Listed, C-UL, CE, RoHS