

ASCO™ Medium Pressure Gas Shutoff Valves

Direct Acting | 1-1/4" - 1-1/2" NPT

2/2
SERIES
K3A7

Features

- 2-way normally closed operation
- Die-cast aluminum bodies
- For positive shutoff on pilot or main gas lines of commercial and industrial gas burners
- Valves provided with 1/8" NPT upstream and downstream pipe tap with plug for routine testing
- Broad ambient temperature range -40° F up to 160° F

Fluid

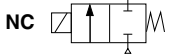
Fuel Gas

Construction

Valve Parts in Contact with Fluids	
Body	Aluminum
Seals & Disc	NBR
Core Tube	305 Stainless Steel
Core & Plugnut	430F Stainless Steel
Core Guide	Acetal
Springs	302F Stainless Steel
Shading Coil	Copper
Pipe Plug	Zink-Plated Steel

Electrical

Standard Coil & Class of Insulation	Watt Rating & Power Consumption			Ambient Temp °F (°C)	Spare Coil Family
	AC				
	Watts	VA Holding	VA Inrush		General Purpose AC
H	20	40	112	-40 to 160 (-40 to 71)	529030
Standard Voltages: 120 volts, AC 60 Hz Optional Voltages: 24, 240 volts AC, 60 Hz K3A catalog number includes codification for voltage. However voltage must be specified when ordering spare coil.					



Solenoid Enclosures

Standard: Type 1 General Purpose Junction Box Housing with two 7/8" knock-outs.

Valve Response Time

Opening Time: Less than 1 second

Closing Time: Less than 1 second

Close-off Pressure

50 psi (3.5 bar) maximum

Approvals

UL listed to standard 429 "Electrically Operated Valves," Guide Y10Z, File MP932 Safety Valves.

FM Approved to Class 7400 "Liquid and Gas Safety Shutoff Valves"

CSA Certified to Automatic Gas Valves ANSI Z21.21, CSA 6.5 C/I (meets standard C22.2 No. 139 "Electrically Operated Valves"), File 112872

COMBUSTION

Specifications English units (Metric)

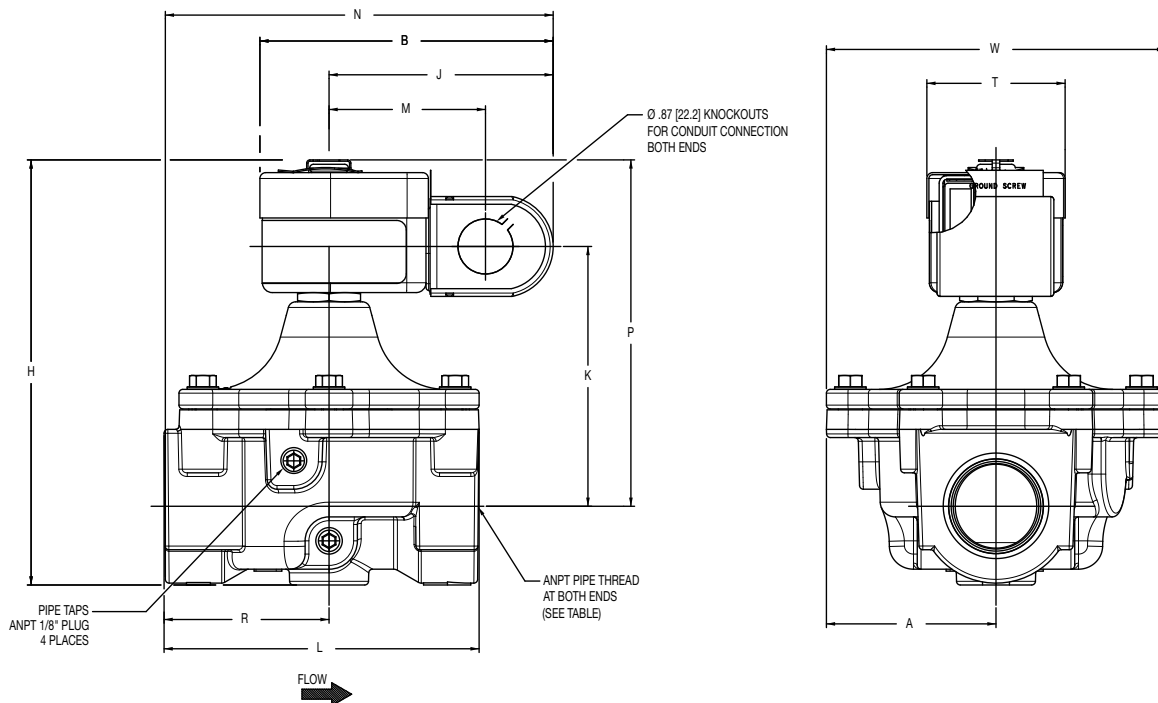
Pipe Size in	Orifice Size in (mm)	Flow Factor Cv (Kv)	Gas Capacity ①	Operating Pressure Differential psi (bar)		Max. Fluid Temp. °F (°C)	Catalog Number			Const. Ref.	Agency			Wattage	Approx. Shipping Weight lbs (kgs)
			Btu/hr.	Min.	Max.		24/60	120/60	240/60		UL	FM	CSA		
			COMBUSTION (Fuel Gas) - NORMALLY CLOSED												
1-1/4"	1-3/8" (35)	17.0 (14.7)	917,000	0	1.5 (0.1)	140 (60)	K3A771V	K3A772V	K3A774V	1	○	○	○	20	4.0 (1.8)
1-1/2"	1-3/8" (35)	17.3 (15.0)	933,000	0	1.5 (0.1)	140 (60)	K3A781V	K3A782V	K3A784V	1	○	○	○	20	3.8 (1.7)
○ = Safety Shutoff Valve. ① 1" W.C. Drop @ 2" W.C. Inlet Pressure, 1,000 Btu/cu.ft. or more, 0.64 Specific Gravity Gas.															

○ = Safety Shutoff Valve. ① 1" W.C. Drop @ 2" W.C. Inlet Pressure, 1,000 Btu/cu.ft. or more, 0.64 Specific Gravity Gas.

Dimensions inches (mm)

Const. Ref.		A	B	H	J	K	L	M	N	P	R	T	W	Mounting Position
1	in	2.70	4.70	6.70	3.60	4.10	5.00	2.50	6.20	5.50	2.60	2.20	5.40	Above Horizontal
	mm	69	118	171	90	105	127	63	157	140	67	56	137	

Const. Ref. 1



COMBUSTION