

# ASCO™ Low Pressure Gas Shutoff Valves

Direct Acting | 3/8" - 1" NPT

2/2  
SERIES  
K3A4

## Features

- 2-way normally closed operation
- Die-cast aluminum bodies
- For positive shutoff on pilot or main gas lines of commercial and industrial gas burners
- Valves provided with 1/8" NPT upstream and downstream pipe tap with plug for routine testing
- Broad ambient temperature range -40° F up to 170° F

## Fluid

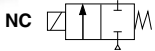
Fuel Gas

## Construction

Valve Parts in Contact with Fluids	
Body	Aluminum
Seals & Disc	NBR
Core Tube	305 Stainless Steel
Core & Plugnut	430F Stainless Steel
Core Guide	Acetal
Springs	302F Stainless Steel
Shading Coil	Copper
Pipe Plug	Zink-Plated Steel

## Electrical

Standard Coil & Class of Insulation	Watt Rating & Power Consumption			Ambient Temp °F (°C)	Spare Coil Family
	AC				General Purpose AC
	Watts	VA Holding	VA Inrush		
F	10.5	21	70	-40 to 167 (-40 to 75)	529027
F	15.4	27	85	-40 to 170 (-40 to 77)	529029
<b>Standard Voltages:</b> 120 volts, AC 60 Hz <b>Optional Voltages:</b> 24, 240 volts AC, 60 Hz K3A catalog number includes codification for voltage. However voltage must be specified when ordering spare coil.					



## Solenoid Enclosures

**Standard:** Type 1 General Purpose Junction Box Housing with two 7/8" knock-outs.

## Valve Response Time

**Opening Time:** Less than 1 second

**Closing Time:** Less than 1 second

## Close-off Pressure

50 psi (3.5 bar) maximum

## Approvals

UL listed to standard 429 "Electrically Operated Valves," Guide Y10Z, File MP932 Safety Valves.

FM Approved to Class 7400 "Liquid and Gas Safety Shutoff Valves"

CSA Certified to Automatic Gas Valves ANSI Z21.21, CSA 6.5 C/I (meets standard G22.2 No. 139 "Electrically Operated Valves"), File 112872

COMBUSTION

## Specifications English units (Metric)

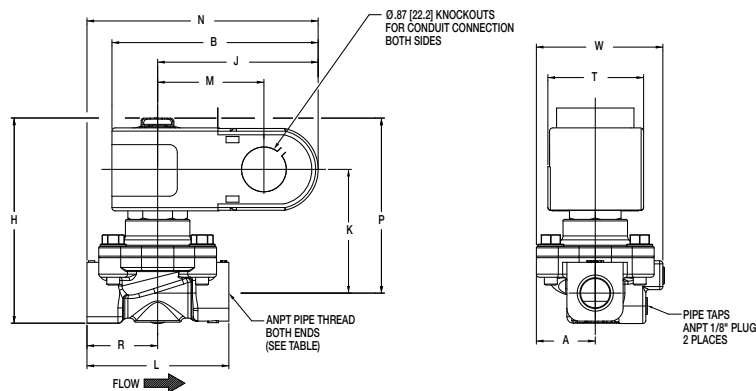
Pipe Size in	Orifice Size in (mm)	Flow Factor Cv (Kv)	Gas Capacity ①	Operating Pressure Differential psi (bar)		Max. Fluid Temp. °F (°C)	Catalog Number			Const. Ref.	Agency			Wattage	Approx. Shipping Weight lbs (kgs)
			Btu/hr.	Min.	Max.		24/60	120/60	240/60		UL	FM	CSA		
COMBUSTION (Fuel Gas) - NORMALLY CLOSED															
3/8"	3/4" (19)	4.0 (3.5)	210,000	0	0.5 (.03)	140 (60)	K3A431V	K3A432V	K3A434V	1	○	○	○	10.5	1.5 (.7)
1/2"	3/4" (19)	5.4 (4.7)	291,000	0	0.5 (.03)	140 (60)	K3A441V	K3A442V	K3A444V	1	○	○	○	10.5	1.5 (.7)
3/4"	3/4" (19)	9.5 (8.2)	512,000	0	0.5 (.03)	140 (60)	K3A451V	K3A452V	K3A454V	2	○	○	○	10.5	1.7 (.8)
1"	1 3/8" (35)	14.6 (12.6)	787,200	0	0.5 (.03)	140 (60)	K3A461V	K3A462V	K3A464V	3	○	○	○	15.4	2.9 (1.3)
○ = Safety Shutoff Valve. ① 1" W.C. Drop @ 2" W.C. Inlet Pressure, 1,000 Btu/cu.ft. or more, 0.64 Specific Gravity Gas.															

○ = Safety Shutoff Valve. ① 1" W.C. Drop @ 2" W.C. Inlet Pressure, 1,000 Btu/cu.ft. or more, 0.64 Specific Gravity Gas.

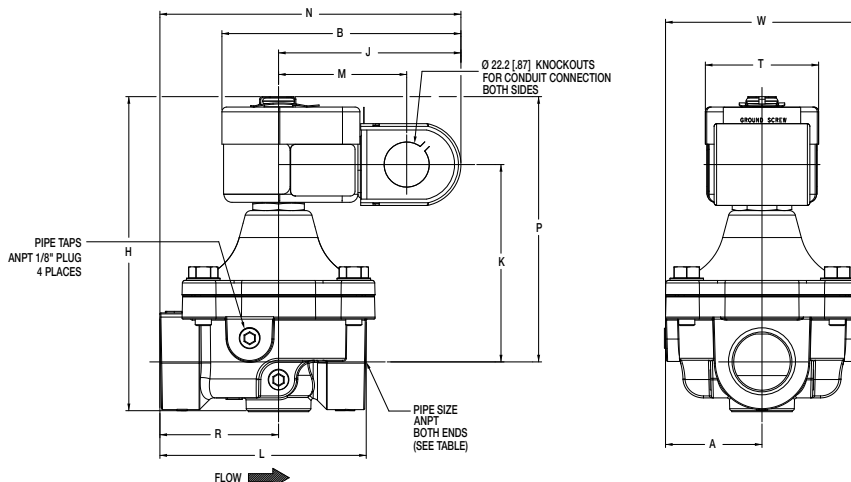
## Dimensions inches (mm)

Const. Ref.		A	B	H	J	K	L	M	N	P	R	T	W	Mounting Position
1	in	1.14	4.00	4.00	3.11	2.40	2.75	2.06	4.48	3.39	1.37	1.86	2.45	Any
	mm	29	101	101	79	61	70	52	114	86	35	47	62	
2	in	1.14	4.00	4.26	3.11	2.59	3.31	2.06	4.77	3.58	1.66	1.86	2.33	Any
	mm	29	101	108	79	66	84	52	121	91	42	47	59	
3	in	1.9	4.6	6.1	3.5	3.8	4	2.5	5.8	5.1	2.3	2.2	3.7	Above Horizontal
	mm	48	118	155	90	97	102	63	148	131	58	56	95	

### Const. Ref. 1, 2



### Const. Ref. 3



# ASCO™ High Pressure Gas Shutoff Valves

Direct Acting | 3/8" - 1" NPT

2/2  
SERIES  
K3A5

## Features

- 2-way normally closed operation
- Die-cast aluminum bodies
- For positive shutoff on pilot or main gas lines of commercial and industrial gas burners
- Valves provided with 1/8" NPT upstream and downstream pipe tap with plug for routine testing
- Broad ambient temperature range -40° F up to 160° F

## Fluid

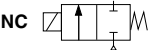
Fuel Gas

## Construction

Valve Parts in Contact with Fluids	
Body	Aluminum
Seals & Disc	NBR
Core Tube	305 Stainless Steel
Core & Plugnut	430F Stainless Steel
Core Guide	Acetal
Springs	302F Stainless Steel
Shading Coil	Copper
Pipe Plug	Zink-Plated Steel

## Electrical

Standard Coil & Class of Insulation	Watt Rating & Power Consumption			Ambient Temp °F (°C)	Spare Coil Family
	AC				
	Watts	VA Holding	VA Inrush		
H	16.7	31	90	-40 to 140 (-40 to 60)	529028
H	20	40	112	-40 to 160 (-40 to 71)	529030
<b>Standard Voltages:</b> 120 volts, AC 60 Hz <b>Optional Voltages:</b> 24, 240 volts AC, 60 Hz K3A catalog number includes codification for voltage. However voltage must be specified when ordering spare coil.					



## Solenoid Enclosures

**Standard:** Type 1 General Purpose Junction Box Housing with two 7/8" knock-outs.

## Valve Response Time

**Opening Time:** Less than 1 second

**Closing Time:** Less than 1 second

## Close-off Pressure

50 psi (3.5 bar) maximum

## Approvals

UL listed to standard 429 "Electrically Operated Valves," Guide Y10Z, File MP932 Safety Valves.

FM Approved to Class 7400 "Liquid and Gas Safety Shutoff Valves"

CSA Certified to Automatic Gas Valves ANSI Z21.21, CSA 6.5 C/I (meets standard C22.2 No. 139 "Electrically Operated Valves"), File 112872

COMBUSTION

# Specifications English units (Metric)

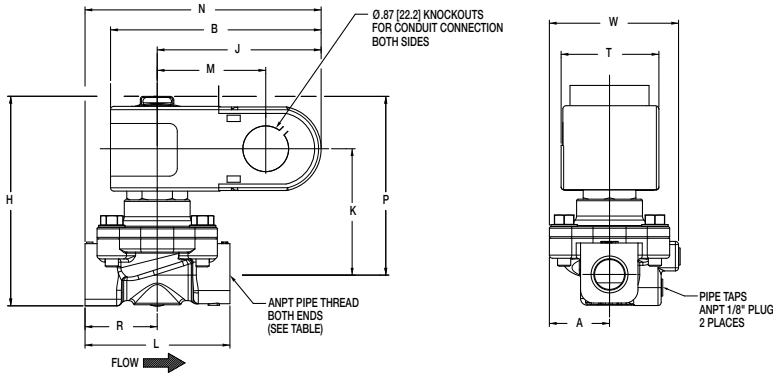
Pipe Size in	Orifice Size in (mm)	Flow Factor Cv (Kv)	Gas Capacity ①	Operating Pressure Differential psi (bar)		Max. Fluid Temp. °F (°C)	Catalog Number			Const. Ref.	Agency			Wattage	Approx. Shipping Weight lbs (kgs)
			Btu/hr.	Min.	Max.		24/60	120/60	240/60		UL	FM	CSA		
			COMBUSTION (Fuel Gas) - NORMALLY CLOSED												
3/8"	3/4" (19)	4.0 (3.5)	226, 500	0	6 (0.4)	140 (60)	K3A531V	K3A532V	K3A534V	1	○	○	○	16.7	1.5 (.7)
1/2"	3/4" (19)	5.0 (4.3)	272, 300	0	6 (0.4)	140 (60)	K3A541V	K3A542V	K3A544V	1	○	○	○	16.7	1.5 (.7)
3/4"	3/4" (19)	9.5 (8.2)	512, 000	0	3 (0.2)	140 (60)	K3A551V	K3A552V	K3A554V	2	○	○	○	16.7	1.7 (.8)
1"	1 3/8" (35)	14.6 (12.6)	787, 200	0	1.5 (0.1)	140 (60)	K3A561V	K3A562V	K3A564V	3	○	○	○	20.0	2.9 (1.3)

○ = Safety Shutoff Valve. ① 1" W.C. Drop @ 2" W.C. Inlet Pressure, 1,000 Btu/cu.ft. or more, 0.64 Specific Gravity Gas.

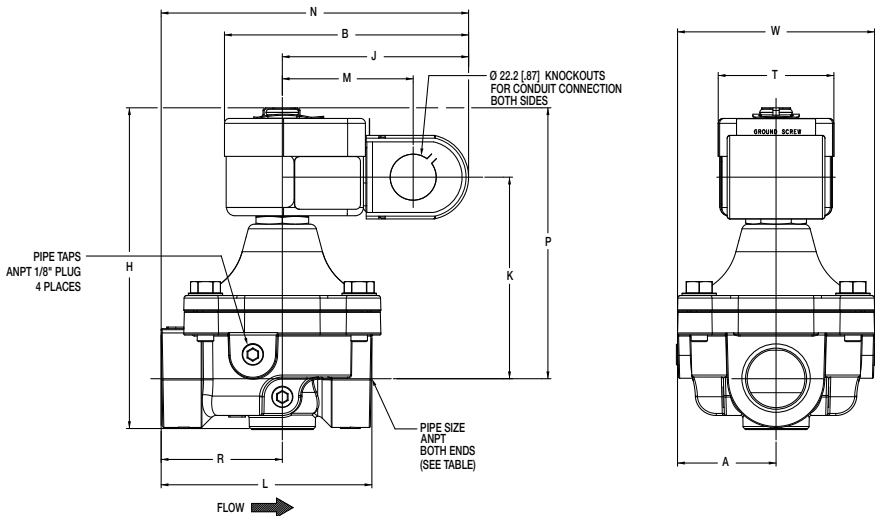
# Dimensions inches (mm)

Const. Ref.		A	B	H	J	K	L	M	N	P	R	T	W	Mounting Position
1	in	1.14	4.00	4.00	3.11	2.40	2.75	2.06	4.48	3.39	1.37	1.86	2.45	Any
	mm	29	101	101	79	61	70	52	114	86	35	47	62	
2	in	1.14	4.00	4.26	3.11	2.59	3.31	2.06	4.77	3.58	1.66	1.86	2.33	Any
	mm	29	101	108	79	66	84	52	121	91	42	47	59	
3	in	1.9	4.6	6.1	3.5	3.8	4	2.5	5.8	5.1	2.3	2.2	3.7	Above Horizontal
	mm	48	118	155	90	97	102	63	148	131	58	56	95	

## Const. Ref. 1, 2



## Const. Ref. 3



# ASCO™ High Pressure Gas Shutoff Valves

Pilot Operated | 3/4" - 1-1/2" NPT

2/2  
SERIES  
K3A6

## Features

- 2-way normally closed operation
- Die-cast aluminum bodies
- For positive shutoff on pilot or main gas lines of commercial and industrial gas burners.
- Valves provided with 1/8" NPT upstream and downstream pipe tap with plug for routine testing
- Broad ambient temperature range -40° F up to 160° F

## Fluid

Fuel Gas

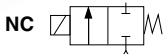
## Construction

Valve Parts in Contact with Fluids	
Body	Aluminum
Seals & Disc	NBR
Core Tube	305 Stainless Steel
Core & Plugnut	430F Stainless Steel
Springs	302F Stainless Steel
Shading Coil	Copper
Pipe Plug	Zink-Plated Steel

## Electrical

Standard Coil & Class of Insulation	Watt Rating & Power Consumption			Ambient Temp °F (°C)	Spare Coil Family
	AC				General Purpose AC
	Watts	VA Holding	VA Inrush		
H	20	40	212	-40 to 160 (-40 to 71)	529030

**Standard Voltages:** 120 volts, AC 60 Hz  
**Optional Voltages:** 24, 240 volts AC, 60 Hz  
K3A catalog number includes codification for voltage. However voltage must be specified when ordering spare coil.



## Solenoid Enclosures

**Standard:** Type 1 General Purpose Junction Box Housing with two 7/8" knock-outs.

## Valve Response Time

**Opening Time:** Less than 1 second

**Closing Time:** Less than 1 second

## Close-off Pressure

50 psi (3.5 bar) maximum

## Approvals

UL listed to standard 429 "Electrically Operated Valves," Guide Y10Z, File MP932 Safety Valves.

FM Approved to Class 7400 "Liquid and Gas Safety Shutoff Valves"

CSA Certified to Automatic Gas Valves ANSI Z21.21, CSA 6.5 C/I (meets standard C22.2 No. 139 "Electrically Operated Valves"), File 112872

COMBUSTION

## Specifications English units (Metric)

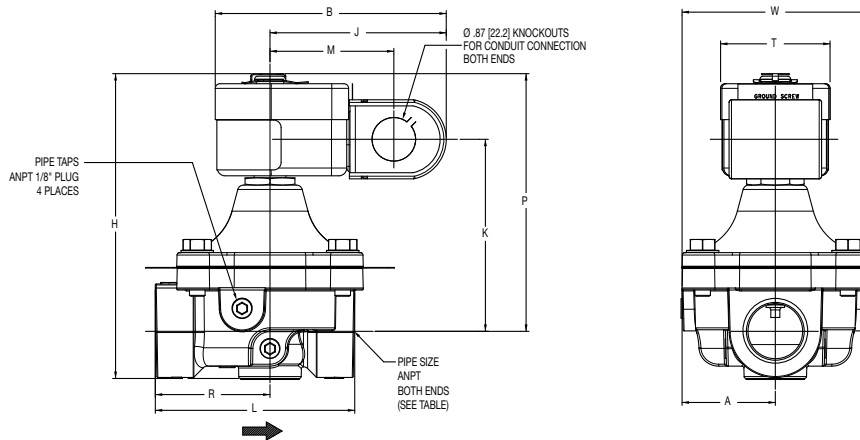
Pipe Size in	Orifice Size in (mm)	Flow Factor Cv (Kv)	Gas Capacity ①	Operating Pressure Differential psi (bar)		Max. Fluid Temp. °F (°C)	Catalog Number			Const. Ref.	Agency			Wattage	Approx. Shipping Weight lbs (kgs)
			Btu/hr.	Min.	Max.		24/60	120/60	240/60		UL	FM	CSA		
COMBUSTION (Fuel Gas) - NORMALLY CLOSED															
3/4"	1-5/8" (43)	14.6 (12.6)	787,200	0	5 (0.3)	140 (60)	K3A651V	K3A652V	K3A654V	1	○	○	○	20	3.1 (1.4)
1"	1-5/8" (43)	18.4 (15.9)	992,100	0	5 (0.3)	140 (60)	K3A661V	K3A662V	K3A664V	1	○	○	○	20	3.1 (1.4)
1-1/4"	1-5/8" (43)	32.0 (27.7)	1,730,000	0	5 (0.3)	140 (60)	K3A671V	K3A672V	K3A674V	2	○	○	○	20	4.0 (1.8)
1-1/2"	1-5/8" (43)	35.0 (30.3)	1,900,000	0	5 (0.3)	140 (60)	K3A681V	K3A682V	K3A684V	2	○	○	○	20	3.8 (1.7)
○ = Safety Shutoff Valve. ① 1" W.C. Drop @ 2" W.C. Inlet Pressure, 1,000 Btu/cu.ft. or more, 0.64 Specific Gravity Gas.															

○ = Safety Shutoff Valve. ① 1" W.C. Drop @ 2" W.C. Inlet Pressure, 1,000 Btu/cu.ft. or more, 0.64 Specific Gravity Gas.

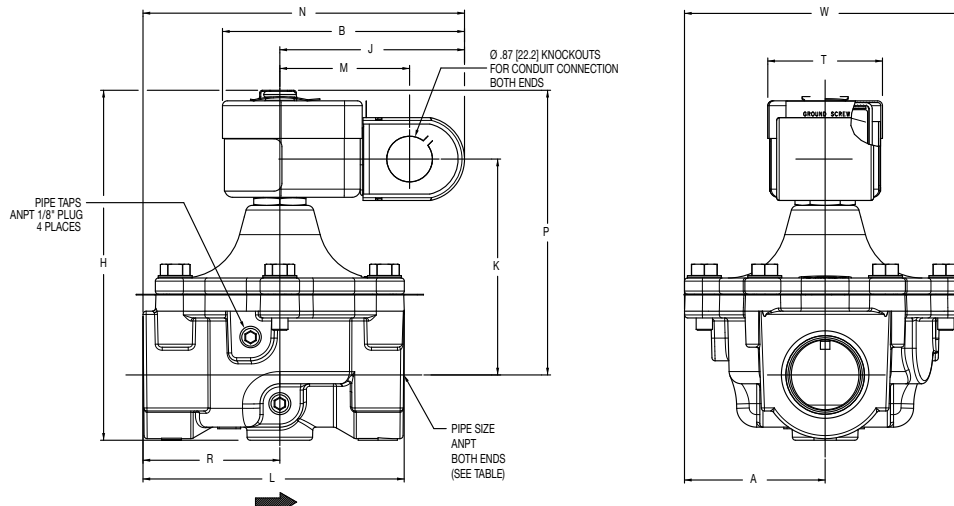
## Dimensions inches (mm)

Const. Ref.		A	B	H	J	K	L	M	N	P	R	T	W	Mounting Position
1	in	1.90	4.60	6.10	3.50	3.90	4.00	2.50	5.80	5.20	2.30	2.20	3.70	Above Horizontal
	mm	48	118	155	90	98	102	63	148	131	58	56	95	
2	in	2.70	4.60	6.7	3.5	4.1	5	2.5	6.2	5.5	2.6	2.2	5.4	Above Horizontal
	mm	68	118	170	90	105	127	63	156	138	67	56	137	

### Const. Ref. 1



### Const. Ref. 2



# ASCO™ Medium Pressure Gas Shutoff Valves

Direct Acting | 1-1/4" - 1-1/2" NPT

2/2  
SERIES  
K3A7

## Features

- 2-way normally closed operation
- Die-cast aluminum bodies
- For positive shutoff on pilot or main gas lines of commercial and industrial gas burners
- Valves provided with 1/8" NPT upstream and downstream pipe tap with plug for routine testing
- Broad ambient temperature range -40° F up to 160° F

## Fluid

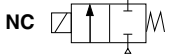
Fuel Gas

## Construction

Valve Parts in Contact with Fluids	
Body	Aluminum
Seals & Disc	NBR
Core Tube	305 Stainless Steel
Core & Plugnut	430F Stainless Steel
Core Guide	Acetal
Springs	302F Stainless Steel
Shading Coil	Copper
Pipe Plug	Zink-Plated Steel

## Electrical

Standard Coil & Class of Insulation	Watt Rating & Power Consumption			Ambient Temp °F (°C)	Spare Coil Family
	AC				
	Watts	VA Holding	VA Inrush		General Purpose AC
H	20	40	112	-40 to 160 (-40 to 71)	529030
<b>Standard Voltages:</b> 120 volts, AC 60 Hz <b>Optional Voltages:</b> 24, 240 volts AC, 60 Hz K3A catalog number includes codification for voltage. However voltage must be specified when ordering spare coil.					



## Solenoid Enclosures

**Standard:** Type 1 General Purpose Junction Box Housing with two 7/8" knock-outs.

## Valve Response Time

**Opening Time:** Less than 1 second

**Closing Time:** Less than 1 second

## Close-off Pressure

50 psi (3.5 bar) maximum

## Approvals

UL listed to standard 429 "Electrically Operated Valves," Guide Y10Z, File MP932 Safety Valves.

FM Approved to Class 7400 "Liquid and Gas Safety Shutoff Valves"

CSA Certified to Automatic Gas Valves ANSI Z21.21, CSA 6.5 C/I (meets standard C22.2 No. 139 "Electrically Operated Valves"), File 112872

COMBUSTION

## Specifications English units (Metric)

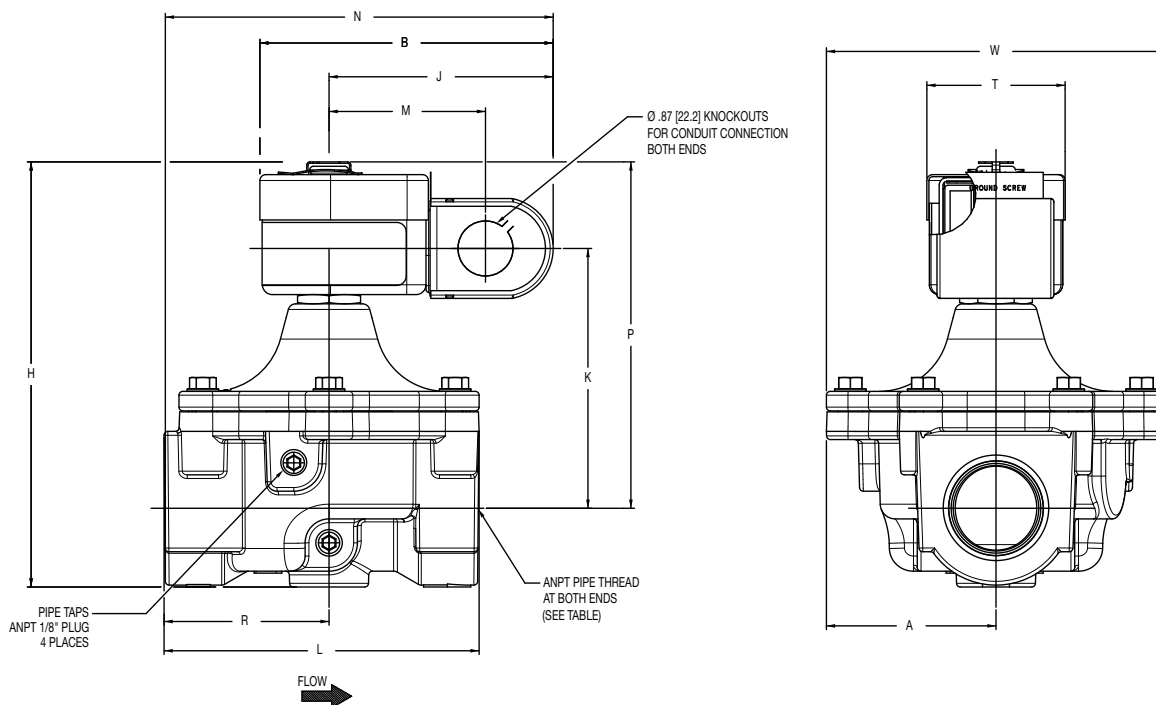
Pipe Size in	Orifice Size in (mm)	Flow Factor Cv (Kv)	Gas Capacity ①	Operating Pressure Differential psi (bar)		Max. Fluid Temp. °F (°C)	Catalog Number			Const. Ref.	Agency			Wattage	Approx. Shipping Weight lbs (kgs)
			Btu/hr.	Min.	Max.		24/60	120/60	240/60		UL	FM	CSA		
			COMBUSTION (Fuel Gas) - NORMALLY CLOSED												
1-1/4"	1-3/8" (35)	17.0 (14.7)	917,000	0	1.5 (0.1)	140 (60)	K3A771V	K3A772V	K3A774V	1	○	○	○	20	4.0 (1.8)
1-1/2"	1-3/8" (35)	17.3 (15.0)	933,000	0	1.5 (0.1)	140 (60)	K3A781V	K3A782V	K3A784V	1	○	○	○	20	3.8 (1.7)
○ = Safety Shutoff Valve. ① 1" W.C. Drop @ 2" W.C. Inlet Pressure, 1,000 Btu/cu.ft. or more, 0.64 Specific Gravity Gas.															

○ = Safety Shutoff Valve. ① 1" W.C. Drop @ 2" W.C. Inlet Pressure, 1,000 Btu/cu.ft. or more, 0.64 Specific Gravity Gas.

## Dimensions inches (mm)

Const. Ref.		A	B	H	J	K	L	M	N	P	R	T	W	Mounting Position
1	in	2.70	4.70	6.70	3.60	4.10	5.00	2.50	6.20	5.50	2.60	2.20	5.40	Above Horizontal
	mm	69	118	171	90	105	127	63	157	140	67	56	137	

### Const. Ref. 1



COMBUSTION