

Sinorix® Engineered Fire Suppression Systems

Pressure-Actuated Control Head

Engineered (Pneumatic & Manual Actuation)

Model CPY-PAS2

ARCHITECT AND ENGINEER SPECIFICATIONS

- Core fitting made to fasten onto top-plug adapters that are 1.5 inches (3.75 cm.) in diameter
- Pneumatic release for secondary cylinders
- High-quality brass construction
- Self-venting



Product Overview

The Sinorix Pressure-Actuated Head (Model CPY-PAS2) allows for pneumatic pressure actuation of Sinorix cylinders. Model CPY-PAS2 is to be mounted directly on the top-plug-adapter assembly.

Model CPY-PAS2 fastens to top-plug adapters that have a core fitting of 1.5 inches (3.75 cm.) in diameter.

The pressure from port marked 'M' on the cylinder valve is self-venting to prevent accidental system discharge in the event of a gradual build up of pressure in a pilot line.

See: Installation & Operations Manual (IOM) for further details:

- Sinorix 1230 – IOM 500-697971
- Sinorix 227 – IOM 500-697967
- Sinorix 5112 – IOM A6V13437188

Installation

To install Model CPY-PAS2, remove the protection cap from the top-plug adapter. After the protection cap has been removed, install Model CPY-PAS2 with the flexible-actuation hose or tubing attached to the actuation line.

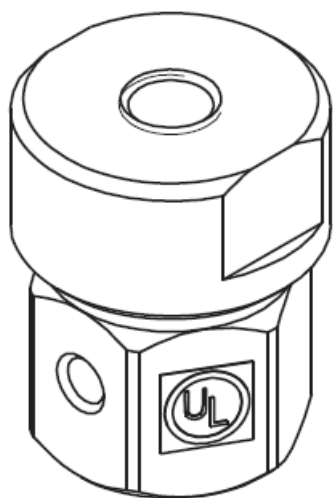
Details for Ordering

Model	Part Number	Description
CPY-PAS2	500-697926BG-2	Pressure-Actuated Control Head

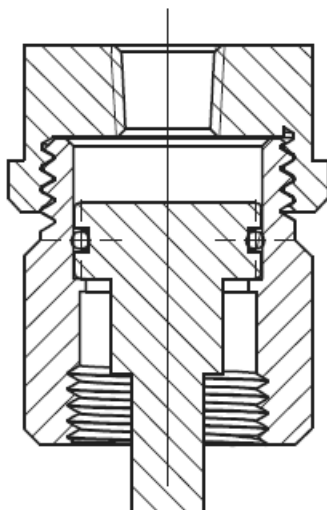
[Pressure-Actuated Control Head]

Sinorix® **6629**

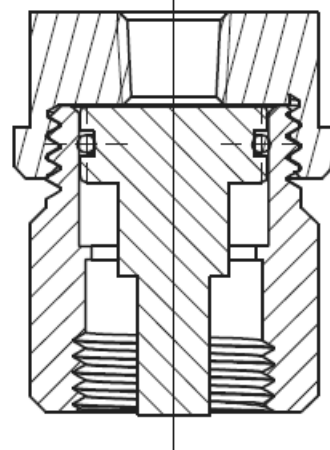
Mounting Diagrams



CPY-PAS2



ACTUATION OF
PISTON DURING
OPERATION



PUSH UP ON PISTON
ROD TO RETURN TO
NORMAL STATE

WARNING! Ensure that the pilot line is unpressurized and actuating piston is in the retracted (SET) position. The pistons are to be manually pushed back to the top of the piston actuators.

Failure to follow this procedure will result in accidental discharge of the Sinorix cylinder when the control head is installed on the cylinder.

Notice: This marketing data sheet is not intended to be used for system design or installation purposes. For the most up-to-date information, refer to each product's installation instructions.